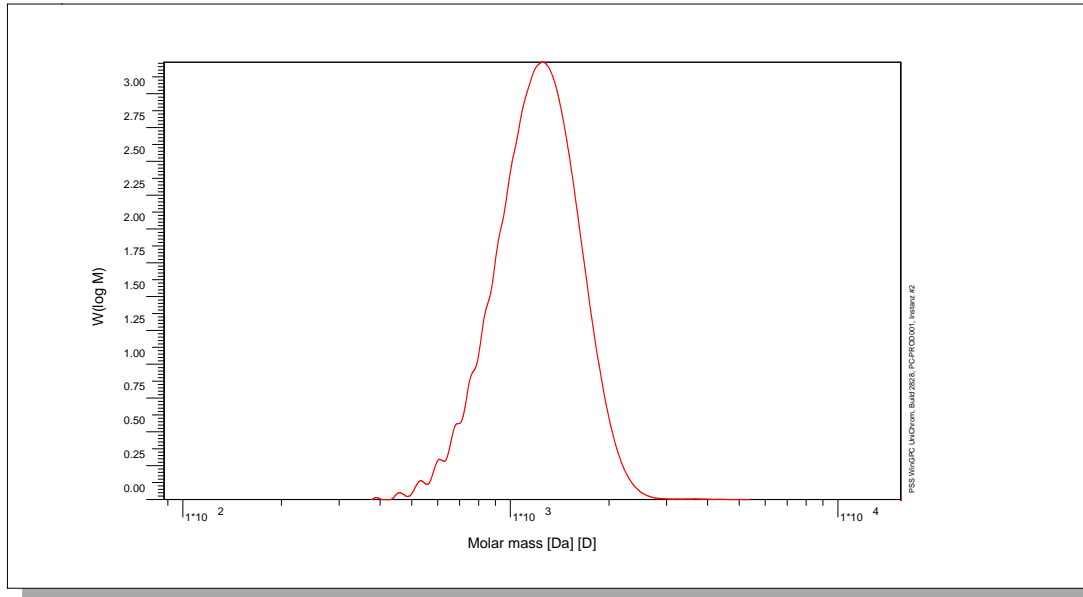


Certificate of Analysis

Polymer type: Poly(isoprene-1.4)
 Part No: PSS-pio1.2k
 Lot No: pio3072

Molar Mass Distribution



GPC/SEC - Conditions

Sample concentration	1,00 g/l	Inject volume	100 µl
Solvent	THF	Flow rate	1,00 ml/min
Precolumn [8 x 50 mm]	PSS SDV 5µm	Temperature	23 °C
Columns [analytical, each 8 x 300 mm]	PSS SDV 5µm 100Å / 1 000Å	Operator	rl
Data Acquisition Software	PSS WinGPC		

GPC/SEC - Results

Detector	Mw [Da]	Mn [Da]	Mp [Da]	PDI [Mw/Mn]
Shodex RI 71	1250	1150	1280	1,09

Note:

Mw = Weight average molecular weight
 Mn = Number average molecular weight
 Mp = Molar mass at the peak maximum
 PDI = Polydispersity Index

Polymer stabilized with 0.1% BHT.

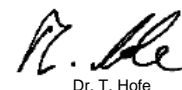
Microstructure of the polymer (estimated uncertainty: +/- 5%):

Poly(isoprene-3.4) 6%
 Poly(isoprene-1.4) 94%

Storage: Store the tightly recapped polymer standard in a dry, dark, cool area; e.g. a refrigerator (4 °C).

Date of expiry: See product label.

Manufacture and control according to PSS method of analysis



Dr. T. Hofe
 production director

