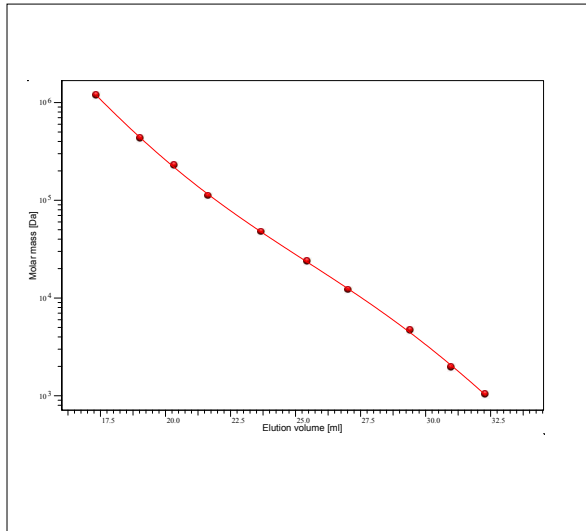


Certificate of Analysis

Product: Kit Poly(isoprene-1.4)
 Part No: PSS-piokit
 Lot No: piokit-08

GPC/SEC - Calibration Curve



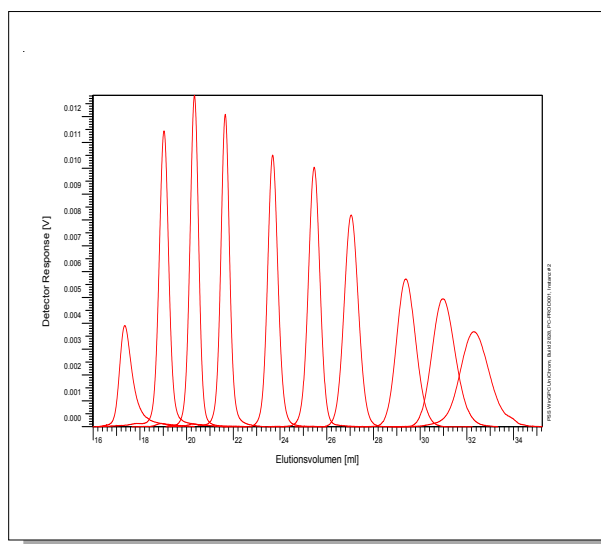
GPC/SEC - Calibration Table

Elution volume [ml]	Mp [Da]	Polymer Lot No:	Polymer Part No:
17,35	1180000	pio140904n	PSS-pio1m
19,03	434000	pio160904	PSS-pio470k
20,34	226000	pio200313	PSS-pio210k
21,65	111000	pio180315	PSS-pio100k
23,69	47500	pio190706	PSS-pio47k
25,46	23500	pio130706	PSS-pio21k
27,04	12100	pio140115	PSS-pio12k
29,41	4620	pio260115	PSS-pio4.7k
30,99	1960	pio180313	PSS-pio2.1k
32,31	1030	pio151007	PSS-pio1k

Note:

Mp = Molar mass at the peak maximum

GPC/SEC - Polymer Overlay



GPC/SEC - Calibration Conditions

Solvent	Tetrahydrofurane
Flow rate	1,00 ml/min
Precolumn [8 x 50 mm]	PSS SDV 5µm
Columns [8 x 300 mm]	PSS SDV 5µm 10e3Å / 10e5Å / 10e6Å
Temperature	35 °C
Inject volume	20 µl
Internal standard	Toluene at 37,63 ml
Data Acquisition Software	PSS WinGPC
Calibration by	J.Preis

Fit quality

Fit-type	PSS Poly 5
R	0,999935

Storage: Store the tightly recapped polymer standards in a dry, dark, cool area; e.g. a refrigerator (4 °C).
 Date of expiry: See product label.

Manufacture and control according to PSS method of analysis



Dr. T. Hofe
production director