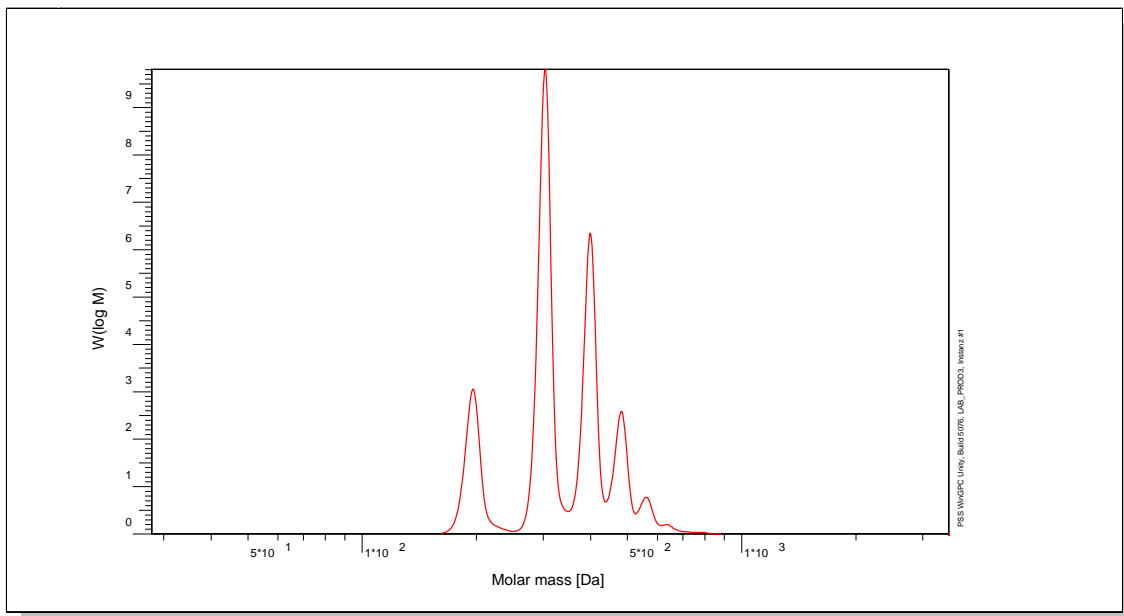


# Certificate of Analysis

Polymer type: Poly(styrene)  
 Part No: PSS-ps300  
 Lot No: ps17041

## Molar Mass Distribution



## GPC/SEC - Conditions

Sample concentration	1,50 g/l	Inject volume	20 µl
Solvent	THF	Flow rate	1,00 ml/min
Precolumn [8 x 50 mm]	PSS SDV 5µm	Temperature	23,0° C
Columns [analytical, each 8 x 300 mm]	PSS SDV 5µm 100 Å / 1 000Å	Operator	M.Hofferberth
Data Acquisition Software	PSS WinGPC		

## GPC/SEC - Results

Detector	Mw (Da)	Mn (Da)	Mp (Da)	PDI (Mw/Mn)
Shodex RI 71	309	269	265	1,15

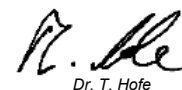
**Note:**

Mw = Weight Average Molecular Weight  
 Mn = Number Average Molecular Weight  
 Mp = Molar Mass at the Peak Maximum  
 PDI = Polydispersity Index

**Storage:** Store the tightly recapped polymer standard in a dry, dark, cool area; e.g. a refrigerator (4 °C).

**Date of expiry:** See product label.

*Manufacture and control according to PSS method of analysis*



Dr. T. Hofe  
production director

