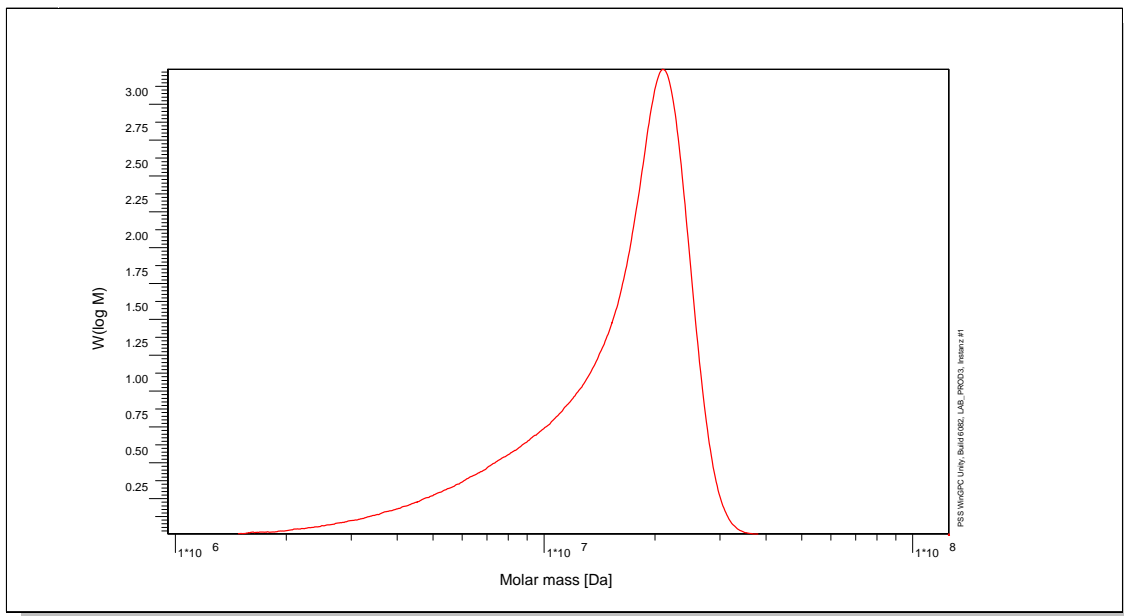


Certificate of Analysis

Polymer type: Poly(styrene)
 Part No: PSS-ps20m
 Lot No: ps290103

Molar Mass Distribution



GPC/SEC - Conditions

Sample concentration	0,10 g/l	Inject volume	100 µl
Solvent	THF	Flow rate	0,50 ml/min
Precolumn [8 x 50 mm]	PSS SDVe 10µm	Temperature	23,0° C
Columns [analytical, each 8 x 300 mm]	PSS SDVe 10µm 10e5Å / 10e5Å	Operator	R. Leinweber
Data Acquisition Software	PSS WinGPC		

GPC/SEC - Results

Detector	Mw (Da)	Mn (Da)	Mp (Da)	PDI (Mw/Mn)
Shodex RI 71	16800000	12600000	21100000	1,33


Note:

Mw = Weight Average Molecular Weight
 Mn = Number Average Molecular Weight
 Mp = Molar Mass at the Peak Maximum
 PDI = Polydispersity Index

Storage: Store the tightly recapped polymer standard in a dry, dark, cool area; e.g. a refrigerator (4 °C).

Date of expiry: See product label.

Manufacture and control according to PSS method of analysis


 Dr. T. Hofe
 production director

