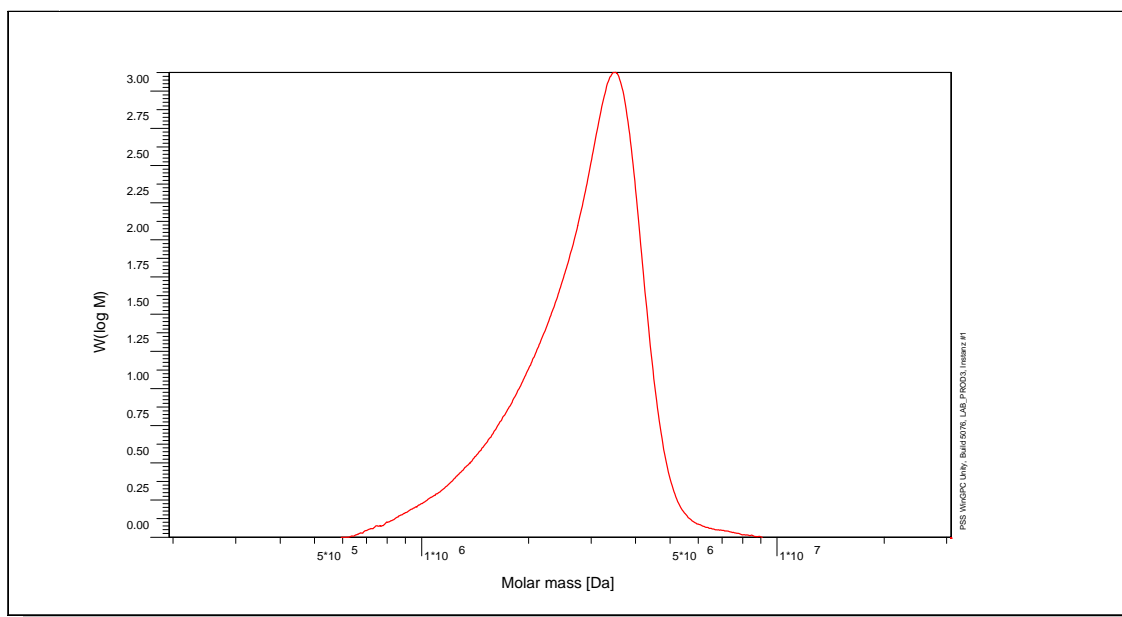


# Certificate of Analysis

Polymer type: Poly(styrene)  
 Part No: PSS-ps3.2m  
 Lot No: ps5097

## Molar Mass Distribution



## GPC/SEC - Conditions

Sample concentration	0,10 g/l	Inject volume	100 µl
Solvent	THF	Flow rate	0,50 ml/min
Precolumn [8 x 50 mm]	PSS SDVe 10µm	Temperature	23,0° C
Columns [analytical, each 8 x 300 mm]	PSS SDVe 10µm 10e5 Å / 10e5Å	Operator	R. Leinweber
Data Acquisition Software	PSS WinGPC		

## GPC/SEC - Results

Detector	Mw (Da)	Mn (Da)	Mp (Da)	PDI (Mw/Mn)
Shodex RI 71	3000000	2560000	3690000	1,17

### Note:

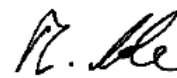
Mw = Weight Average Molecular Weight  
 Mn = Number Average Molecular Weight  
 Mp = Molar Mass at the Peak Maximum  
 PDI = Polydispersity Index

**Storage:** Store the tightly recapped polymer standard in a dry, dark, cool area; e.g. a refrigerator (4 °C).

**Expiration date:** 5 years after purchase date provided standard is stored as described above.

**Purchase date:**

Manufacture and control according to PSS method of analysis



Dr. T. Hofe  
production director