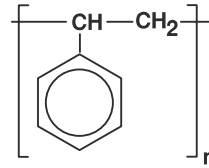
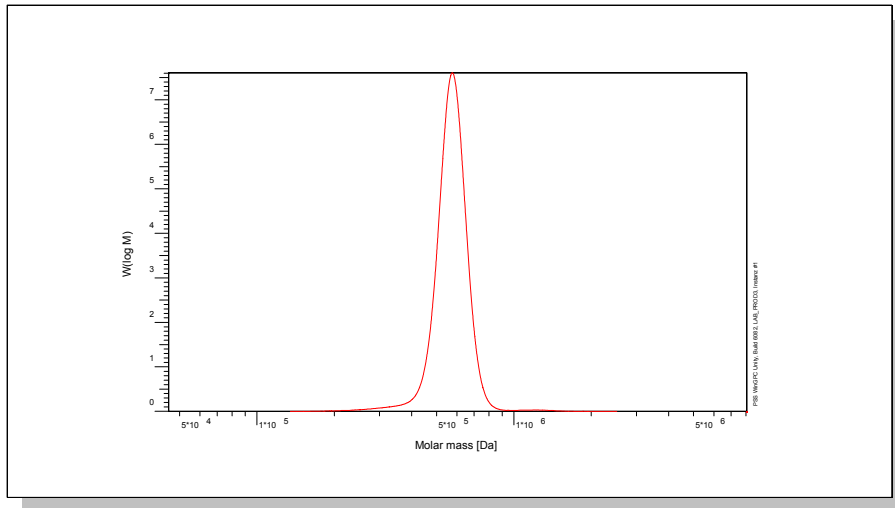


Certificate of Analysis

Polymer type: DIN-Poly(styrene)
 Part No: PSS-dps560k
 Lot No: ps61120di



Molar Mass Distribution



GPC/SEC - Conditions

Sample concentration	1,00 g/l	Inject volume	20 µl
Solvent	Tetrahydrofuran	Flow rate	1,00 ml/min
Precolumn [8 x 50 mm]	PSS SDV 5µm	Temperature	25,0 °C
Columns [analytical, each 8 x 300 mm]	PSS SDV 5µm 10e3Å / 10e5Å / 10e6Å	Operator	S. Fugmann
Data Acquisition Software	PSS WinGPC		

GPC/SEC - Results

Detector	Mw [Da]	Mn [Da]	Mp [Da]	PDI [Mw/Mn]
Shodex RI 71	546000	536000	556000	1,02

Additional Methods - Results

Method	Mw [Da]	Mn [Da]
Light Scattering	542 000	-
Vapour Pressure Osmometry	-	-
Nuclear Magnetic Resonance	-	-

Note:
 Mw = Weight average molecular weight
 Mn = Number average molecular weight
 Mp = Molar mass at the peak maximum
 PDI = Polydispersity Index

All analysis run according to ISO EN 13885 and DIN 55672

Storage: Store the tightly recapped polymer standard in a dry, dark, cool area; e.g. a refrigerator (4 °C).

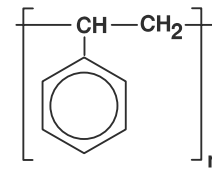
Date of expiry: See product label.

Manufacture and control according to PSS method of analysis



Dr. T. Hofe
 production director

Polymer type: DIN-Poly(styrene)
 Part No: PSS-dps560k
 Lot No: ps61120di



Light Scattering - Conditions

Light Scattering static, based on Toluene Rayleigh Ratio $R_{\theta} = 1.404 \cdot 10^{-5} \text{ cm}^{-1}$ at 633 nm.

Instrument: Wyatt Tech DAWN-F, 488 nm
 Solvent: Toluene p.A.
 Temperature: 25 °C
 Sample dn/dc: 0.1099 ml/g

Light Scattering - Zimm Plot

