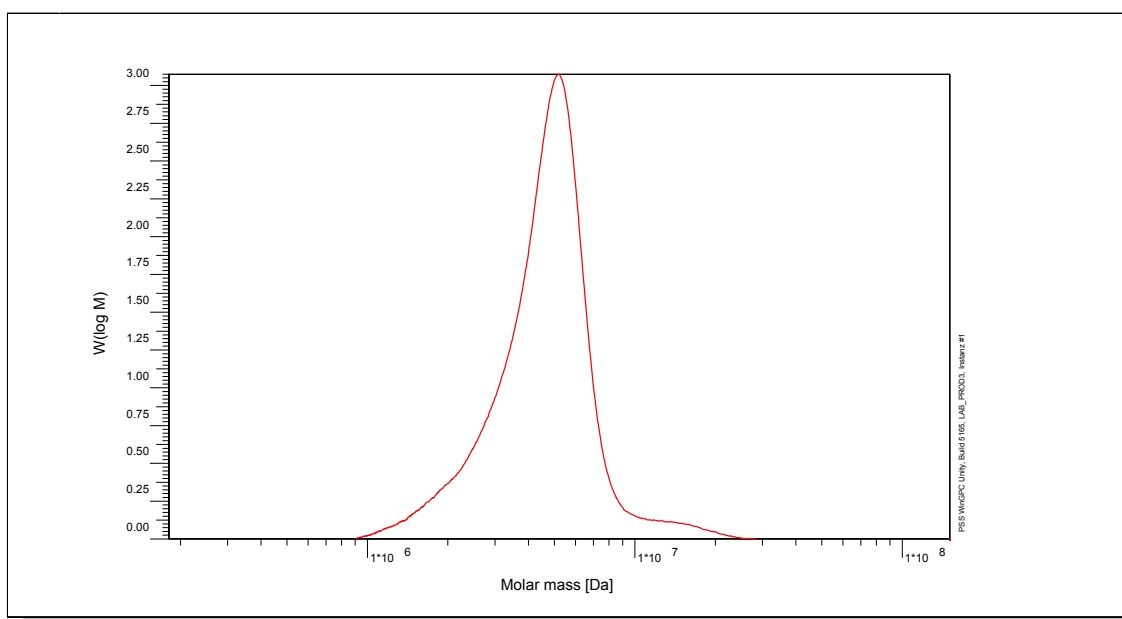


# Certificate of Analysis

Polymer type: Poly(styrene) fluorescein labeled  
 Part No: PSS-pslf5m  
 Lot No: ps7025-l

## Molar Mass Distribution



## GPC/SEC - Conditions

Sample concentration	0,60 g/l	Inject volume	20 µl
Solvent	THF	Flow rate	0,50 ml/min
Precolumn [8 x 50 mm]	PSS SDVe 10µm	Temperature	23,0° C
Columns [analytical, each 8 x 300 mm]	PSS SDVe 10µm 10e5Å / 10e5Å	Operator	S. Fugmann
Data Acquisition Software	PSS WinGPC		

## GPC/SEC - Results

Detector	Mw [Da]	Mn [Da]	Mp [Da]	PDI [Mw/Mn]
Shodex RI 71	5310000	4490000	5840000	1,18

**Note:**

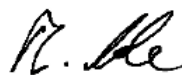
Mw = Weight Average Molecular Weight  
 Mn = Number Average Molecular Weight  
 Mp = Molar Mass at the Peak Maximum  
 PDI = Polydispersity Index

**Storage:** Store the tightly recapped polymer standard in a dry, dark, cool area; e.g. a refrigerator (4 °C).

**Expiration date:** 2 years after purchase date provided standard is stored as described above.

**Purchase date:**

Manufacture and control according to PSS method of analysis



Dr. T. Hofe  
production director