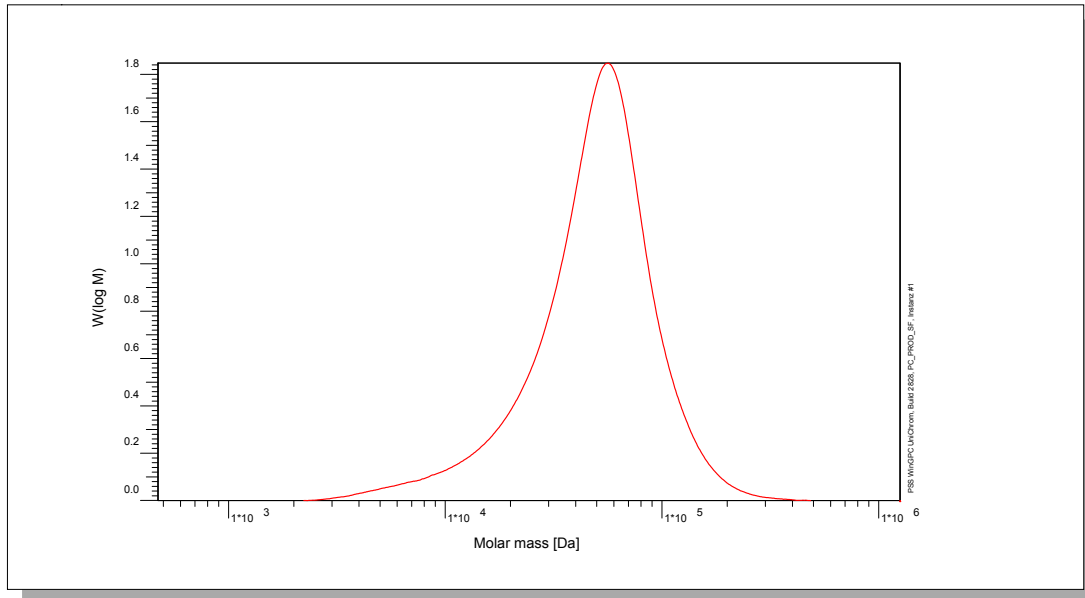


Certificate of Analysis

Polymer type: Poly(styrene) broad
 Part No: PSS-psb60k
 Lot No: psbr60k

Molar Mass Distribution



GPC/SEC - Conditions

Sample concentration	3,00 g/l	Inject volume	20 µl
Flow rate	1,00 ml/min	Temperature	23 °C
Solvent	Tetrahydrofuran		
Precolumn [8 x 50 mm]	PSS SDV 5µm		
Columns [analytical, each 8 x 300 mm]	PSS SDV 5µm 10e3Å / 10e5Å / 10e6Å		
Data Acquisition Software	PSS WinGPC	Operator	S. Fugmann

GPC/SEC - Results

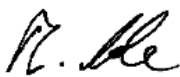
Detector	Mw [Da]	Mn [Da]	Mp [Da]	PDI [Mw/Mn]
Shodex RI 71	57500	35700	-	1,61

Note:

Mw = Weight average molecular weight
 Mn = Number average molecular weight
 Mp = Molar mass at the peak maximum
 PDI = Polydispersity Index

Storage: Store the tightly recapped polymer standard in a dry, dark, cool area; e.g. a refrigerator (4 °C).
Date of expiry: See product label.

Manufacture and control according to PSS method of analysis


 Dr. T. Hofe
 production director

