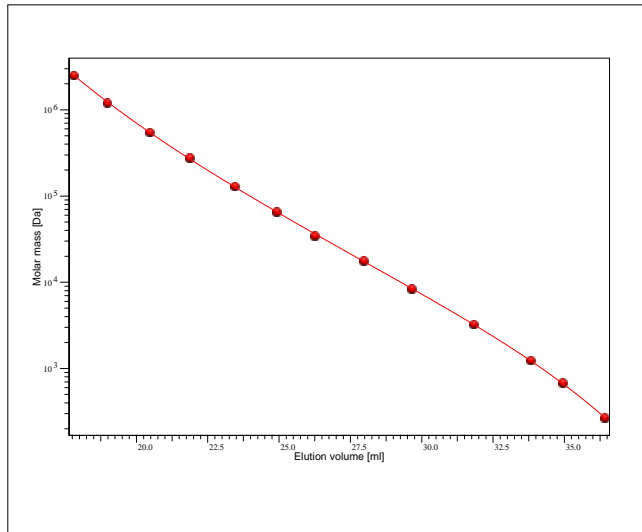


Certificate of Analysis

Kit type: Kit Poly(styrene) high
 Part No: PSS-pskith
 Lot No: pskith-05

GPC/SEC - Calibration Curve



GPC/SEC - Calibration Table

Elution volume [ml]	Mp [Da]	Polymer Lot No:	Deviation [%]
17,8123	2520000	ps090705	-0,3850
18,9800	1210000	ps1087	2,4370
20,4775	549000	ps7077	-0,7671
21,8643	277000	ps31059	-2,4230
23,4348	130000	ps5124	-1,2831
24,9319	66000	ps14057	-1,1673
26,2609	34800	ps9029n	4,6821
27,9496	17600	ps250504	0,0989
29,6592	8400	ps18028	0,6685
31,8206	3250	ps23012	-0,2349
33,8186	1250	ps171209	-1,5665
34,9478	682	ps23096n	-2,1849
36,4038	266	ps23096n	2,3766

Note:

Mp = Molar mass at the peak maximum

GPC/SEC - Calibration Conditions

Solvent	Tetrahydrofuran
Flow rate	1,00 ml/min
Precolumn [8 x 50 mm]	PSS SDV 5µm
Columns [8 x 300 mm]	PSS SDV 5µm 10e3Å / 10e5Å / 10e6Å
Temperature	23° C
Inject volume	20 µl
Internal standard	Toluene at 39,71 ml
Data Acquisition Software	PSS WinGPC
Calibration by	S. Fugmann

Fit quality

Fit-type	PSS Poly 5
R	0,999976

Storage: Store the tightly recapped polymer standards in a dry, dark, cool area; e.g. a refrigerator (4 °C).
 Expiration date: 5 years after purchase date provided standard is stored as described above.
 Purchase date:

Manufacture and control according to PSS method of analysis



Dr. T. Hofe
production director