

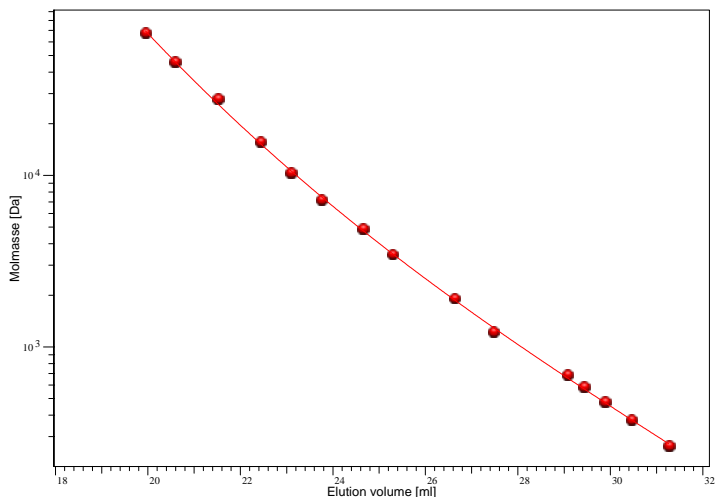
Certificate of Analysis

ReadyCal-Kit Poly(styrene) low

Part No: PSS-pskitr1I

Lot No: pskitr1I-03

GPC/SEC Calibration - Curve

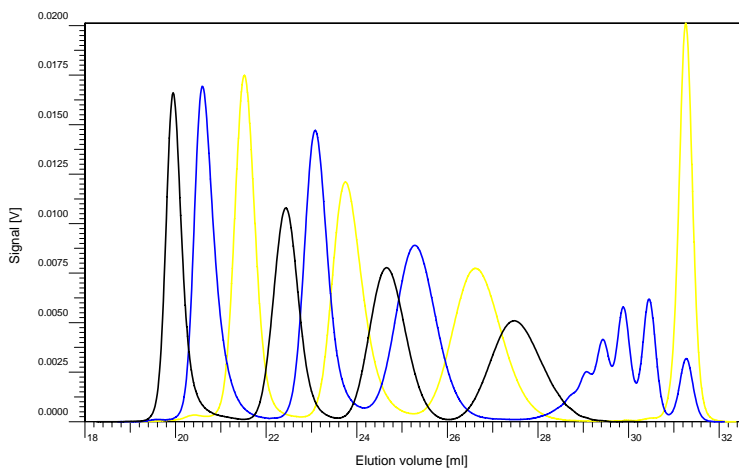


Elution volume [ml]	Mp [Da]	Polymer Lot No:
19,9478	67500	ps1073
20,5882	46000	ps13030
21,5210	28000	ps21116
22,4340	15700	ps1088
23,0874	10400	ps24076
23,7487	7200	ps7128b
24,6533	4870	ps2129
25,2868	3470	ps6126
26,6246	1920	ps11034
27,4732	1220	ps27119
29,0689	688	ps11114
29,4354	584	ps11114
29,8853	480	ps11114
30,4518	376	ps11114
31,2627	266	psp2

Note:

Mp = Molar Mass at the Peak Maximum

GPC/SEC ReadyCal-Kit Overlay



Calibration - Conditions

Solvent	THF
Flow rate	1,00 ml/min
Precolumn [8 x 50 mm]	PSS SDV 5µm
Columns [8 x 300 mm]	PSS SDV 5µm 10e2Å / 10e3Å / 10e4Å
Inject volume	20 µl
Internal standard	System at 36,20 ml
Data Acquisition Software	PSS WinGPC
Calibration by	R. Leinweber
Fit quality	
Fit-type	Polynomial 3
R	0,999811

Storage: Store the tightly recapped polymer standard in a dry, dark, cool area; e.g. a refrigerator (4 °C).

Expiration date: 5 years after purchase date provided standard is stored as described above.

Purchase date:

Manufacture and control according to PSS method of analysis

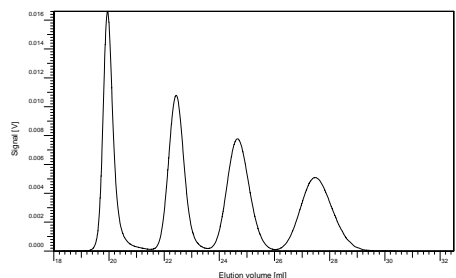
Dr. T. Hofe
production director

Certificate of Analysis

ReadyCal-Kit Poly(styrene) low

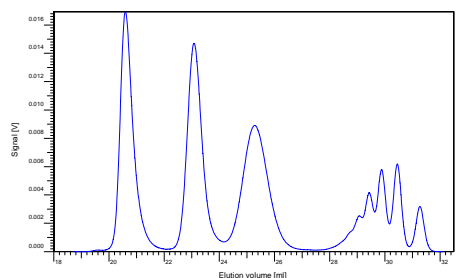
Part No: PSS-pskitr1l

Lot No: pskitr1l-03



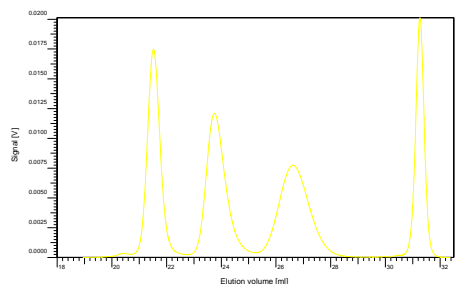
Colour code: Cap - black Vial - clear / without label

Mp [Da]	Mw [Da]	Mn [Da]	Mass [mg]	Lot No:
67 500	67 000	64 000	2.25	ps1073
15 700	15 500	14 700	2.25	ps1088
4 870	4 850	4 620	2.25	ps2129
1 220	1 180	1 100	2.25	ps27119



Colour code: Cap - blue Vial - clear / without label

Mp [Da]	Mw [Da]	Mn [Da]	Mass [mg]	Lot No:
46 000	43 500	42 000	2.25	ps13030
10 400	10 300	10 000	2.25	ps24076
3 470	3 460	3 260	2.25	ps6126
376	484	435	2.25	ps11114**



Colour code: Cap - yellow Vial - clear / without label

Mp [Da]	Mw [Da]	Mn [Da]	Mass [mg]	Lot No:
28 000	27 500	26 600	2.25	ps21116
7 200	7 000	6 700	2.25	ps7128b
1 920	1 890	1 790	2.25	ps11034
266	266	266	2.25	psp2

** Poly(styrene) Mp 376 = highest peak according to the GPC/SEC conditions
(Lot No: ps11114 oligo - mixture with Mp 688, 584, 480, 376, 266)

For exact determination of sample concentration, we recommend to add the solvent volume precisely.

level of eluent	full	half	quarter
volume of eluent	1.50 ml	0.75 ml	0.375 ml
concentration	1.5 g/l	3.0 g/l	6.0 g/l

Notice: Please use suitable caps and septa for high-temperature applications.