

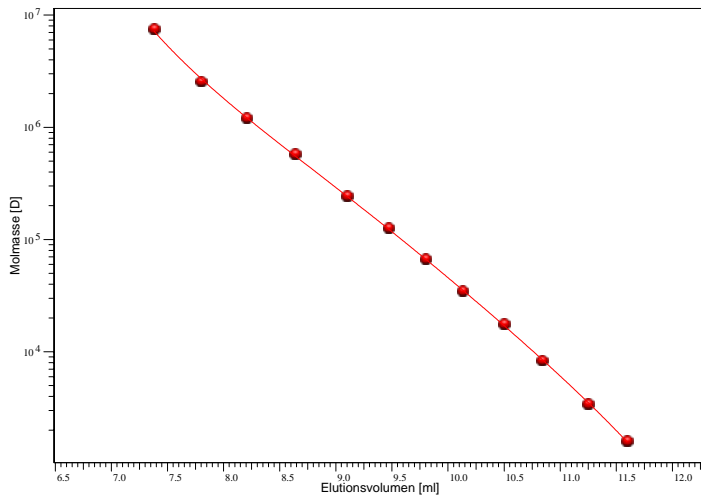
# Certificate of Analysis

ReadyCal-Kit Poly(styrene) high

Part No: PSS-pskitr4h

Lot No: pskitr4h-04

## GPC/SEC Calibration - Curve

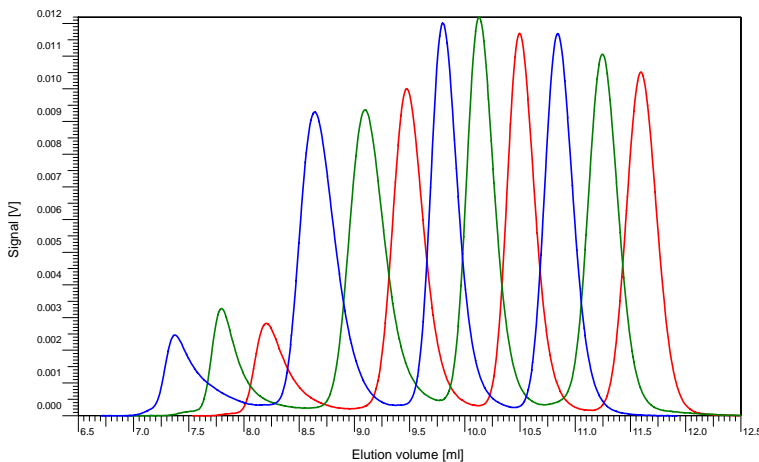


Elution volume [ml]	Mp [Da]	Polymer Lot No:
7,3798	7520000	ps1025
7,7969	2570000	ps23025
8,2031	1210000	ps1087
8,6385	579000	ps27083
9,0973	246000	ps1125
9,4707	127000	ps10065
9,7972	67000	ps16021
10,1309	34800	ps9029n
10,4964	17800	ps21111
10,8392	8400	ps18028
11,2478	3420	ps8124
11,5971	1620	ps12034

**Note:**

Mp = Molar Mass at the Peak Maximum

## GPC/SEC ReadyCal-Kit Overlay



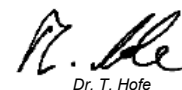
### Calibration - Conditions

Solvent THF  
 Flow rate 0,50 ml/min  
 Precolumn [8 x 50 mm] PSS SDV 10µm  
 Columns [8 x 300 mm] PSS SDV 10µm linear one  
 Inject volume 10 µl  
 Internal standard Toluol at 13,34 ml  
 Data Acquisition Software PSS WinGPC  
 Calibration by S. Fugmann  
**Fit quality**  
 Fit-type PSS Poly 5  
 R 0,999921

**Storage:** Store the tightly recapped polymer standard in a dry, dark, cool area; e.g. a refrigerator (4 °C).

**Date of expiry:** See product label.

Manufacture and control according to PSS method of analysis



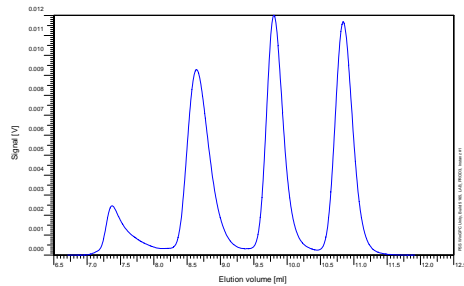
Dr. T. Hofe  
production director



## ReadyCal-Kit Poly(styrene) high

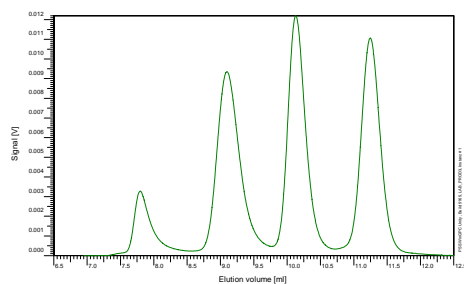
Part No: PSS-pskitr4h

Lot No: pskitr4h-04



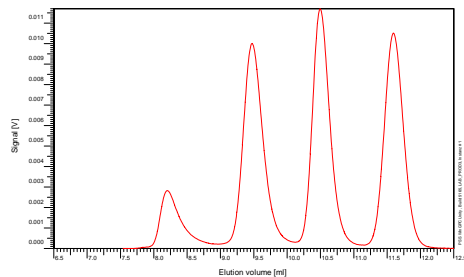
Colour code: Cap - blue Vial - clear / white label

Mp [Da]	Mw [Da]	Mn [Da]	Mass [mg]	Lot No:
7 520 000	6 590 000	5 330 000	1.2*	ps1025
579 000	564 000	545 000	4.0	ps27083
67 000	64 000	60 000	4.0	ps16021
8 400	8 100	7 800	4.0	ps18028



Colour code: Cap - green Vial - clear / white label

Mp [Da]	Mw [Da]	Mn [Da]	Mass [mg]	Lot No:
2 570 000	2 530 000	2 420 000	1.2*	ps23025
246 000	226 000	214 000	4.0	ps1125
34 800	34 000	32 700	4.0	ps9029n
3 420	3 470	3 280	4.0	ps8124



Colour code: Cap - red Vial - clear / white label

Mp [Da]	Mw [Da]	Mn [Da]	Mass [mg]	Lot No:
1 210 000	970 000	935 000	1.2*	ps1087
127 000	120 000	115 000	4.0	ps10065
17 800	17 500	17 000	4.0	ps21111
1 620	1 560	1 500	4.0	ps12034

For exact determination of sample concentration, we recommend to add the solvent volume precisely.

level of eluent	full	half	quarter
volume of eluent	4.0 ml	2.0 ml	1.0 ml
concentration	1 g/l resp. 0.3g/l*	2 g/l resp. 0.6 g/l*	4 g/l resp. 1.2 g/l*

**Notice:** Please use suitable caps and septa for high-temperature applications.