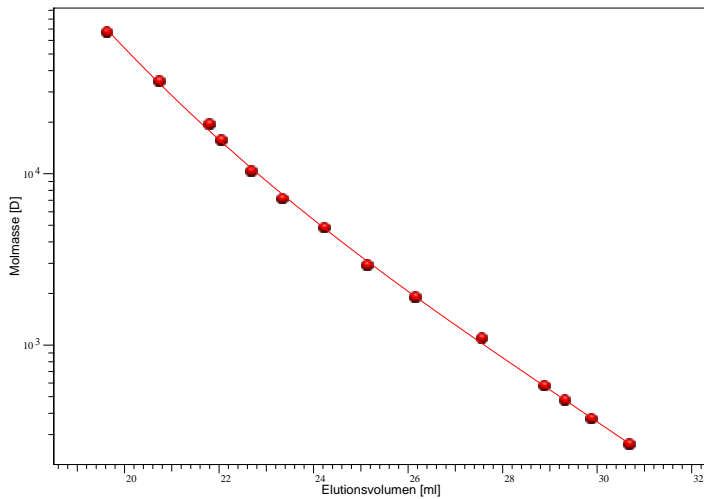


Certificate of Analysis

ReadyCal-Kit Poly(styrene) low
 Part No: PSS-pskitr4I
 Lot No: pskitr4I-02

GPC/SEC Calibration - Curve

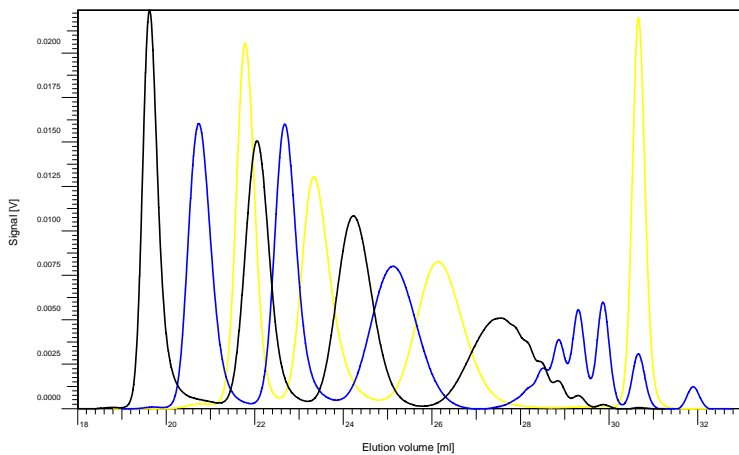


Elution volume [ml]	Mp [Da]	Polymer Lot No:
19,6162	67500	ps1073
20,7341	34800	ps9029n
21,7866	19600	ps12030
22,0457	15700	ps1088
22,6807	10400	ps24076
23,3334	7200	ps7128b
24,2256	4870	ps2129
25,1263	2950	ps7069
26,1443	1920	ps11034
27,5537	1100	ps1109
28,8697	582	ps1129
29,3023	478	ps1129
29,8680	374	ps1129
30,6682	266	psp2

Note:

Mp = Molar Mass at the Peak Maximum

GPC/SEC ReadyCal-Kit Overlay




Calibration - Conditions

Solvent THF
 Flow rate 1,00 ml/min
 Precolumn [8 x 50 mm] PSS SDV 5µm
 Columns [8 x 300 mm] PSS SDV 5µm 10e2Å / 10e3Å / 10e4Å
 Inject volume 20 µl
 Internal standard System at 36,24 ml
 Data Acquisition Software PSS WinGPC
 Calibration by S. Fugmann
Fit quality
 Fit-type Polynomial 3
 R 0,999723

Storage: Store the tightly recapped polymer standard in a dry, dark, cool area; e.g. a refrigerator (4 °C).
Date of expiry: See product label.

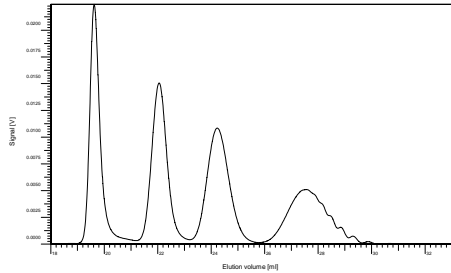
Manufacture and control according to PSS method of analysis


 Dr. T. Hofe
 production director

ReadyCal-Kit Poly(styrene) low

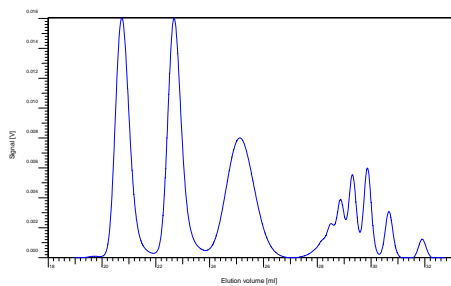
Part No: PSS-pskitr4l

Lot No: pskitr4l-02



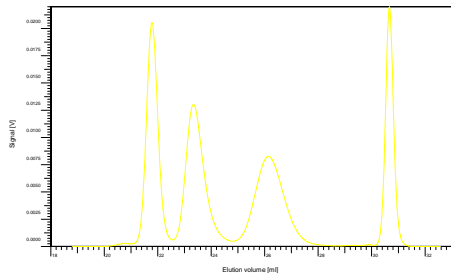
Colour code: Cap - black Vial - clear / without label

Mp [Da]	Mw [Da]	Mn [Da]	Mass [mg]	Lot No:
67 500	67 000	64 000	6.0	ps1073
15 700	15 500	14 700	6.0	ps1088
4 870	4 850	4 620	6.0	ps2129
1 100	1 050	940	6.0	ps1109



Colour code: Cap - blue Vial - clear / without label

Mp [Da]	Mw [Da]	Mn [Da]	Mass [mg]	Lot No:
34 800	34 000	32 700	6.0	ps9029n
10 400	10 300	10 000	6.0	ps24076
2 950	2 980	2 790	6.0	ps7069
374	448	378	6.0	ps1129*



Colour code: Cap - yellow Vial - clear / without label

Mp [Da]	Mw [Da]	Mn [Da]	Mass [mg]	Lot No:
19 600	19 100	18 600	6.0	ps12030
7 200	7 000	6 700	6.0	ps7128b
1 920	1 890	1 790	6.0	ps11034
266	266	266	6.0	psp2

* Poly(styrene) Mp 374 = highest peak according to the GPC/SEC conditions
(Lot No: ps1129 oligo - mixture with Mp 582, 478, 374, 266)

For exact determination of sample concentration, we recommend to add the solvent volume precisely.

level of eluent	full	half	quarter
volume of eluent	4.0 ml	2.0 ml	1.0 ml
concentration	1.5 g/l	3.0 g/l	6.0 g/l

Notice: Please use suitable caps and septa for high-temperature applications.