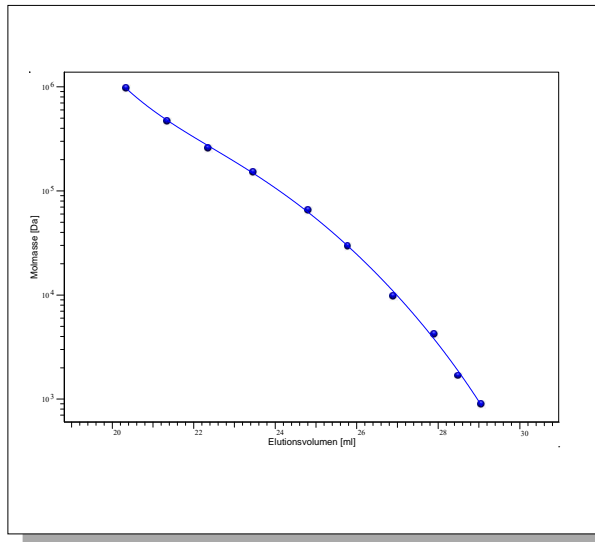


# Certificate of Analysis

Product: Kit Poly(styrene sulfonate) sodium salt  
 Part No: PSS-psskit  
 Lot No: psskit-12

## GPC/SEC - Calibration Curve



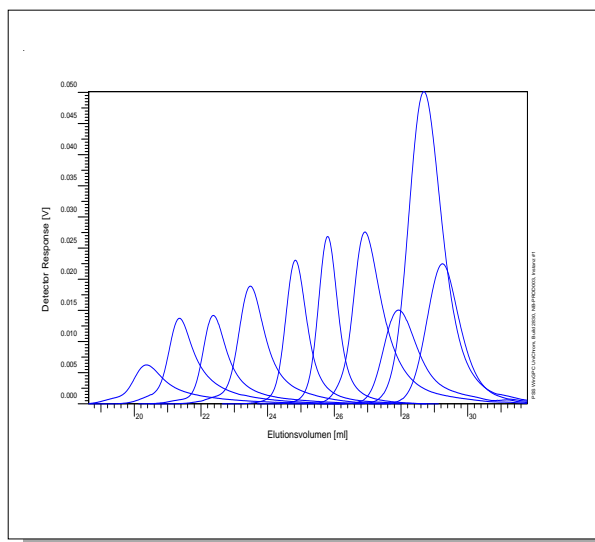
## GPC/SEC - Calibration Table

Elution volume [ml]	Mp [Da]	Polymer Lot No:	Polymer Part No:
20,36	976000	pss14052-5	PSS-pss1m
21,36	470000	pss5070	PSS-pss450k
22,37	258000	pss170511	PSS-pss280k
23,48	151000	pss7065n-2	PSS-pss140k
24,84	65400	pss9029n-2	PSS-pss67k
25,80	29500	pss1088-3	PSS-pss30k
26,93	9740	pss210213	PSS-pss10k
27,92	4210	pss21125-2	PSS-pss4.2k
28,52	1670	pss051214	PSS-pss2k
29,09	891	pss130504-4	PSS-pss1k

**Note:**

Mp = Molar mass at the peak maximum

## GPC/SEC - Polymer Overlay



## GPC/SEC - Calibration Conditions


Solvent H2O, 11,88 g/L Na2HPO4  
 Flow rate 1,00 ml/min  
 Precolumn [8 x 50 mm] PSS MCX 10µm  
 Columns [8 x 300 mm] PSS MCX 10µm 10e3Å / 10e5Å / 10e7Å  
 Temperature 23 °C  
 Inject volume 20 µl  
 Internal standard Ethylene glycol at 37,16 ml  
 Data Acquisition Software PSS WinGPC  
 Calibration by J.Preis

**Fit quality**

Fit-type PSS Poly 5  
 R 0,999631

Storage: Store the tightly recapped polymer standards in a dry, dark, cool area; e.g. a refrigerator (4 °C).  
 Date of expiry: See product label.

Manufacture and control according to PSS method of analysis

  
 Dr. T. Hofe  
 production director