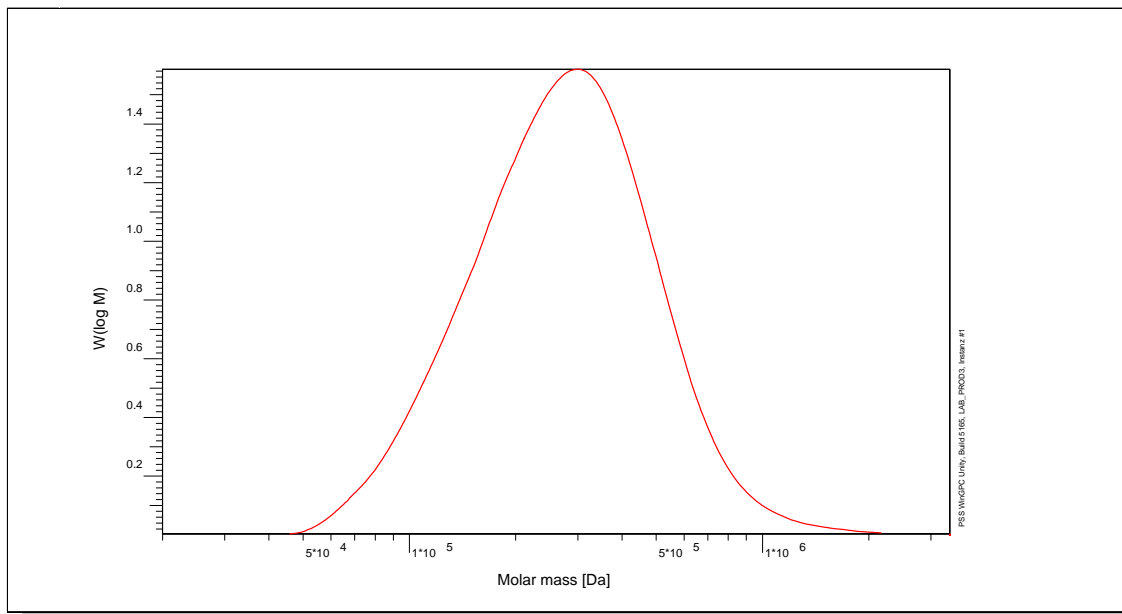


# Certificate of Analysis

Polymer type: Poly(vinyl chloride)  
 Part No: PSS-pvc300k  
 Lot No: pvc0457

## Molar Mass Distribution



## GPC/SEC - Conditions

Sample concentration	1,00 g/l	Inject volume	20 µl
Solvent	Tetrahydrofuran	Flow rate	1,00 ml/min
Precolumn [8 x 50 mm]	PSS SDV 10µm	Temperature	23,0° C
Columns [analytical, each 8 x 300 mm]	PSS SDV 10µm linear XL		
Data Acquisition Software	PSS WinGPC	Operator	G. Reinhold

## GPC/SEC - Results

Detector	Mw [Da]	Mn [Da]	Mp [Da]	PDI [Mw/Mn]
HP 1047A	316000	226000	327000	1,40


**Note:**

- Mw = Weight Average Molecular Weight
- Mn = Number Average Molecular Weight
- Mp = Molar Mass at the Peak Maximum
- PDI = Polydispersity Index

**Storage:** Store the tightly recapped polymer standard in a dry, dark, cool area; e.g. a refrigerator (4 °C).

**Date of expiry:** See product label.

Manufacture control according to PSS method of analysis

  
 Dr. T. Hofe  
 production director

