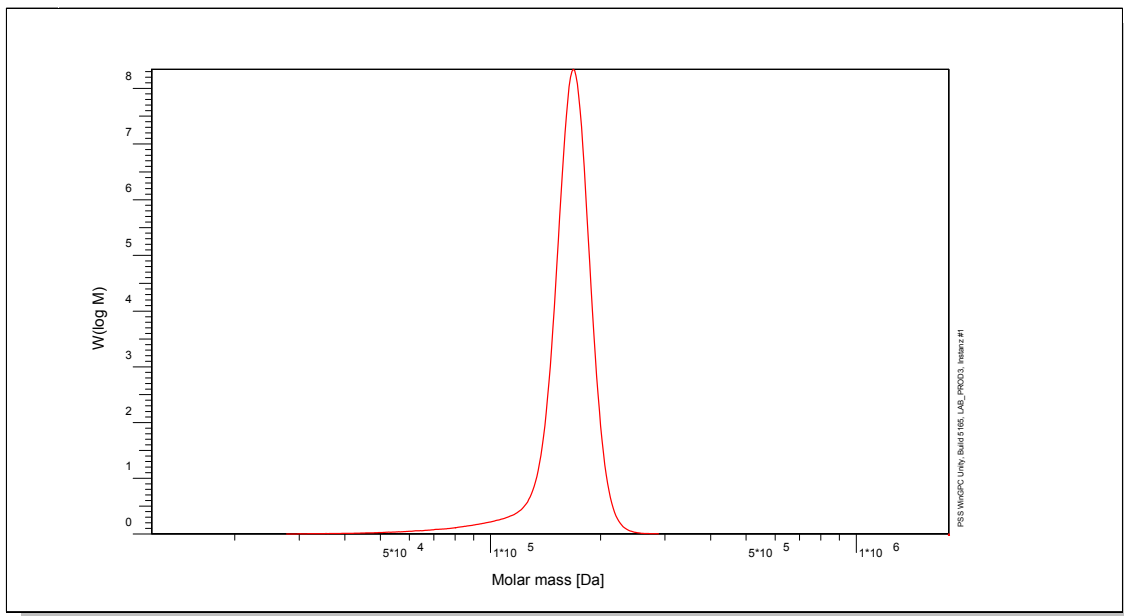


Certificate of Analysis

Polymer type: Poly(styrene) brominated
 Part No: PSS-psbr230k
 Lot No: sbr2069

Molar Mass Distribution



GPC/SEC - Conditions

Sample concentration	1,00 g/l	Inject volume	20 µl
Solvent	THF	Flow rate	1,00 ml/min
Precolumn [8 x 50 mm]	PSS SDV 5µm	Temperature	23,0° C
Columns [analytical, each 8 x 300 mm]	PSS SDV 5µm 10e3Å / 10e5Å / 10e6Å	Operator	S. Fugmann
Data Acquisition Software	PSS WinGPC		

GPC/SEC - Results

Detector	Mw [Da]	Mn [Da]	Mp [Da]	PDI [Mw/Mn]
Shodex RI 71	231000	227000	240000	1,02

*Parent Poly(styrene) Molecular Weight: Mw [Da] = 154 000 Mn [Da] = 151 000 Mp [Da] = 160 000 PDI = 1.02

BchY.

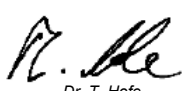
Mw = Weight average molecular weight
 Mn = Number average molecular weight
 Mp = Molar mass at the peak maximum
 PDI = Polydispersity Index

Grade of bromination: 65.1 % molar
 Ultimate analysis: 28.5 % bromine

GrcfUj Y. Store the tightly recapped polymer standard in a dry, dark, cool area; e.g. a refrigerator (4 °C).

Date of expiry. See product label.

Manufacture and control according to PSS method of analysis


 Dr. T. Hofe
 production director

