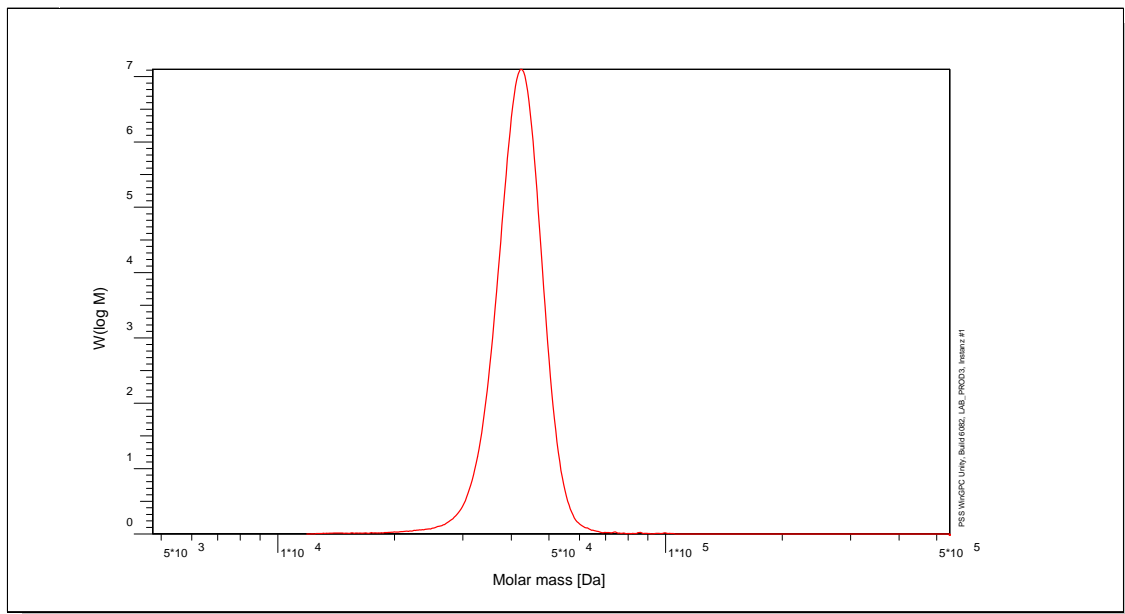


# Certificate of Analysis

Polymer type: Poly(t-butyl methacrylate)  
 Part No: PSS-tbma40k  
 Lot No: tb29110n

## Molar Mass Distribution



## GPC/SEC - Conditions

Sample concentration	1,00 g/l	Inject volume	20 µl
Solvent	THF	Flow rate	1,00 ml/min
Precolumn [8 x 50 mm]	PSS SDV 5µm	Temperature	23,0° C
Columns [analytical, each 8 x 300 mm]	PSS SDV 5µm 10e3Å / 10e5Å / 10e6Å	Operator	S. Fugmann
Data Acquisition Software	PSS WinGPC		

## GPC/SEC - Results

Detector	Mw (Da)	Mn (Da)	Mp (Da)	PDI (Mw/Mn)
Shodex RI 71	42000	41000	42300	1,02


### Note:

Mw = Weight Average Molecular Weight  
 Mn = Number Average Molecular Weight  
 Mp = Molar Mass at the Peak Maximum  
 PDI = Polydispersity Index

**Storage:** Store the tightly recapped polymer standard in a dry, dark, cool area; e.g. a refrigerator (4 °C).

**Date of expiry:** See product label.

Manufacture and control according to PSS method of analysis

  
 Dr. T. Hofe  
 production director

