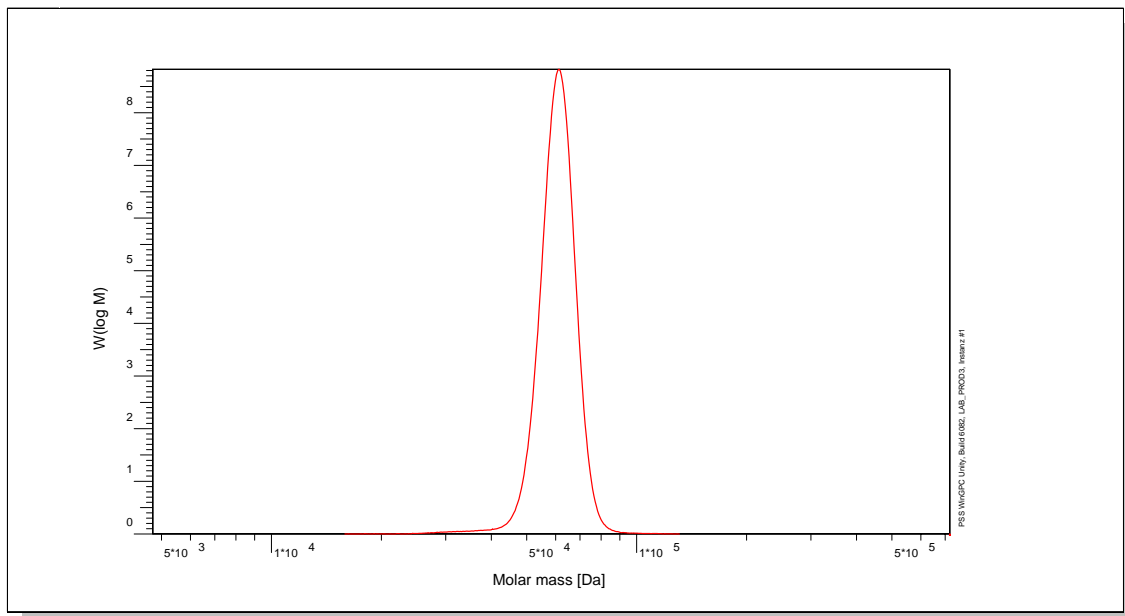


# Certificate of Analysis

Polymer type: Poly(t-butyl methacrylate)  
 Part No: PSS-tbma60k  
 Lot No: tb30107

## Molar Mass Distribution



## GPC/SEC - Conditions

|                                       |                                   |               |             |
|---------------------------------------|-----------------------------------|---------------|-------------|
| Sample concentration                  | 1,00 g/l                          | Inject volume | 20 µl       |
| Solvent                               | THF                               | Flow rate     | 1,00 ml/min |
| Precolumn [8 x 50 mm]                 | PSS SDV 5µm                       | Temperature   | 23,0° C     |
| Columns [analytical, each 8 x 300 mm] | PSS SDV 5µm 10e3Å / 10e5Å / 10e6Å | Operator      | S. Fugmann  |
| Data Acquisition Software             | PSS WinGPC                        |               |             |

## GPC/SEC - Results

| Detector   | Mw (Da) | Mn (Da) | Mp (Da) | PDI (Mw/Mn) |
|------------|---------|---------|---------|-------------|
| Agilent RI | 58900   | 57400   | 60400   | 1,03        |


**Note:**

- Mw = Weight Average Molecular Weight
- Mn = Number Average Molecular Weight
- Mp = Molar Mass at the Peak Maximum
- PDI = Polydispersity Index

**Storage:** Store the tightly recapped polymer standard in a dry, dark, cool area; e.g. a refrigerator (4 °C).

**Date of expiry:** See product label.

Manufacture and control according to PSS method of analysis

  
 Dr. T. Hofe  
 production director

