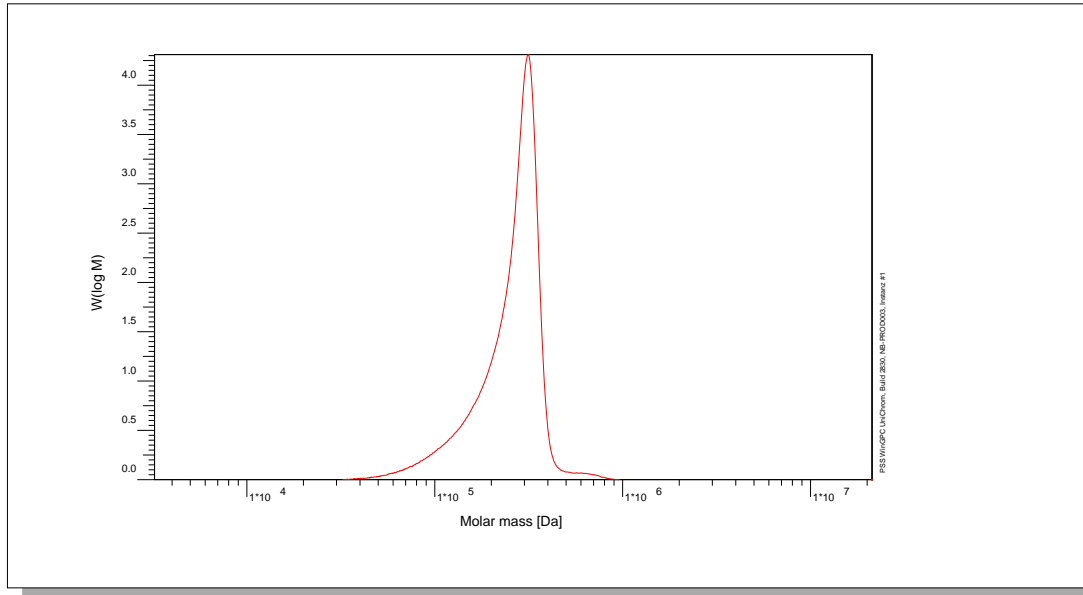


Certificate of Analysis

Polymer type: Poly(alpha-methylstyrene)
 Part No: PSS-ams280k
 Lot No: ams120117

Molar Mass Distribution



GPC/SEC - Conditions

Sample concentration	1,00 g/l	Inject volume	20 µl
Solvent	Tetrahydrofuran	Flow rate	1,00 ml/min
Precolumn [8 x 50 mm]	PSS SDV 5µm	Temperature	23 °C
Columns [analytical, each 8 x 300 mm]	PSS SDV 5µm 10e3Å / 10e5Å / 10e6Å		
Data Acquisition Software	PSS WinGPC	Operator	J.Preis

GPC/SEC - Results

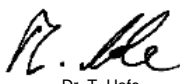
Detector	Mw [Da]	Mn [Da]	Mp [Da]	PDI [Mw/Mn]
SECcurity µRID	267000	226000	315000	1,18

Note:

Mw = Weight average molecular weight
 Mn = Number average molecular weight
 Mp = Molar mass at the peak maximum
 PDI = Polydispersity Index

Storage: Store the tightly recapped polymer standard in a dry, dark, cool area; e.g. a refrigerator (4 °C).
Date of expiry: See product label.

Manufacture and control according to PSS method of analysis



Dr. T. Hofe
production director

