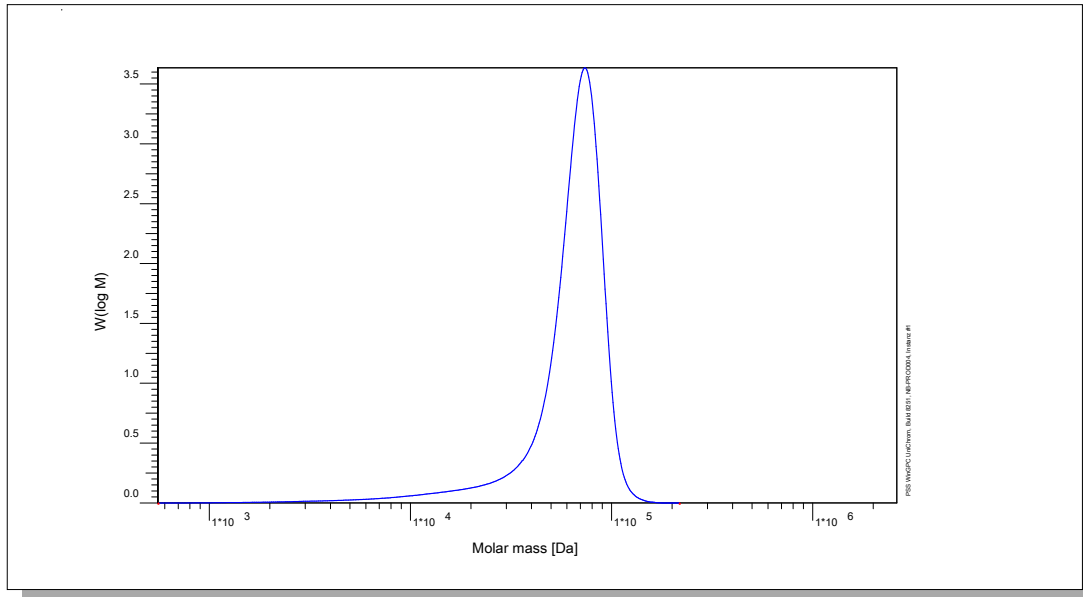


# Certificate of Analysis

Polymer type: Poly(alpha-methylstyrene sulfonate) sodium salt  
 Part No: PSS-amss70k  
 Lot No: amss15066

## Molar Mass Distribution



## GPC/SEC - Conditions

Sample concentration	1,00 g/l	Inject volume	20 µl
Flow rate	1,00 ml/min	Temperature	23 °C
Solvent	H <sub>2</sub> O, 0.07M Na <sub>2</sub> HPO <sub>4</sub>		
Precolumn [8 x 50 mm]	PSS MCX 10µm		
Columns [analytical, each 8 x 300 mm]	PSS MCX 10µm 10e3Å / 10e5Å / 10e7Å		
Data Acquisition Software	PSS WinGPC	Operator	J.Preis

## GPC/SEC - Results

Detector	Mw [Da]	Mn [Da]	Mp [Da]	PDI [Mw/Mn]
PSS SECcurity UV 254nm	73800	-	75200	<1.20

Parent Poly(alpha-methylstyrene) Molecular Weight: Mw [Da] = 41700 Mn [Da] = 41000 Mp [Da] = 42500 PDI = 1.02

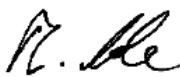
**Note:**

Mw = Weight average molecular weight  
 Mn = Number average molecular weight  
 Mp = Molar mass at the peak maximum  
 PDI = Polydispersity Index

The molecular weights are calculated with the factor 1.77 ( amss sodium salt / ams x 0.95 ). Degree of sulfonation > 90%.  
 (For calculation: Assumption: Degree of sulfonation is 95%).

**Storage:** Store the tightly recapped polymer standard in a dry, dark, cool area; e.g. a refrigerator (4 °C).  
**Date of expiry:** See product label.

Manufacture and control according to PSS method of analysis

  
 Dr. T. Hofe  
 production director

