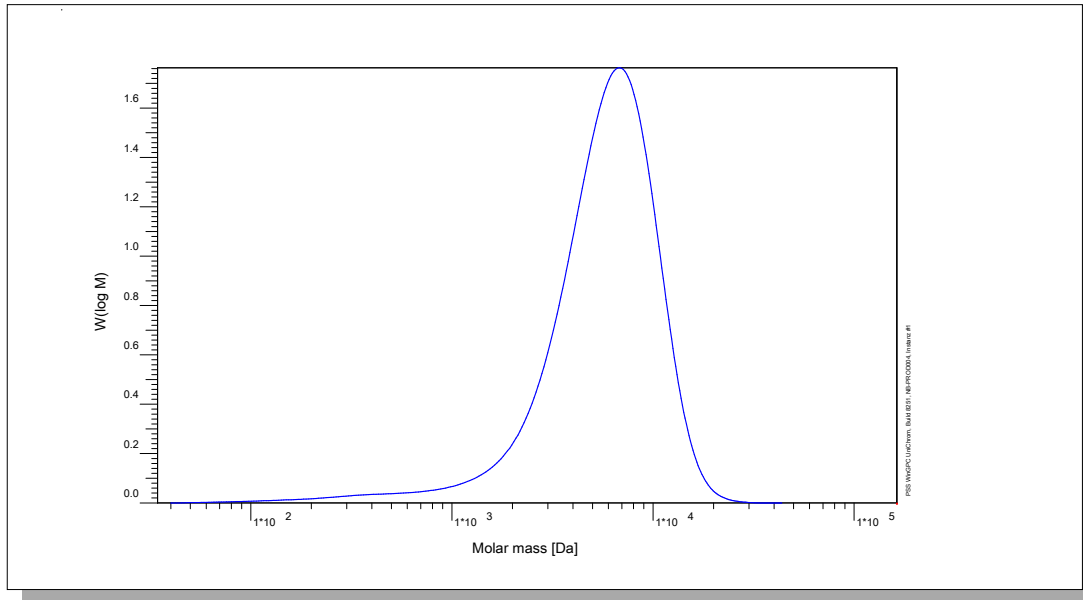


Certificate of Analysis

Polymer type: Poly(alpha-methylstyrene sulfonate) sodium salt
 Part No: PSS-amss7k
 Lot No: amss210215

Molar Mass Distribution



GPC/SEC - Conditions

Sample concentration	1,00 g/l	Inject volume	20 µl
Flow rate	1,00 ml/min	Temperature	23 °C
Solvent	H ₂ O, 0.07M Na ₂ HPO ₄		
Precolumn [8 x 50 mm]	PSS MCX 10µm		
Columns [analytical, each 8 x 300 mm]	PSS MCX 10µm 10e3Å / 10e5Å / 10e7Å		
Data Acquisition Software	PSS WinGPC	Operator	J.Preis

GPC/SEC - Results

Detector	Mw [Da]	Mn [Da]	Mp [Da]	PDI [Mw/Mn]
PSS SECcurity UV 254nm	7270	-	7660	<1.30

Parent Poly(alpha-methylstyrene) Molecular Weight: Mw [Da] = 4110 Mn [Da] = 3590 Mp [Da] = 4330 PDI = 1.14

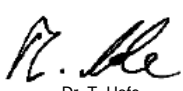
Note:

Mw = Weight average molecular weight
 Mn = Number average molecular weight
 Mp = Molar mass at the peak maximum
 PDI = Polydispersity Index

The molecular weights are calculated with the factor 1.77 (amss sodium salt / ams x 0.95). Degree of sulfonation > 90%.
 (For calculation: Assumption: Degree of sulfonation is 95%).

Storage: Store the tightly recapped polymer standard in a dry, dark, cool area; e.g. a refrigerator (4 °C).
Date of expiry: See product label.

Manufacture and control according to PSS method of analysis


 Dr. T. Hofe
 production director

