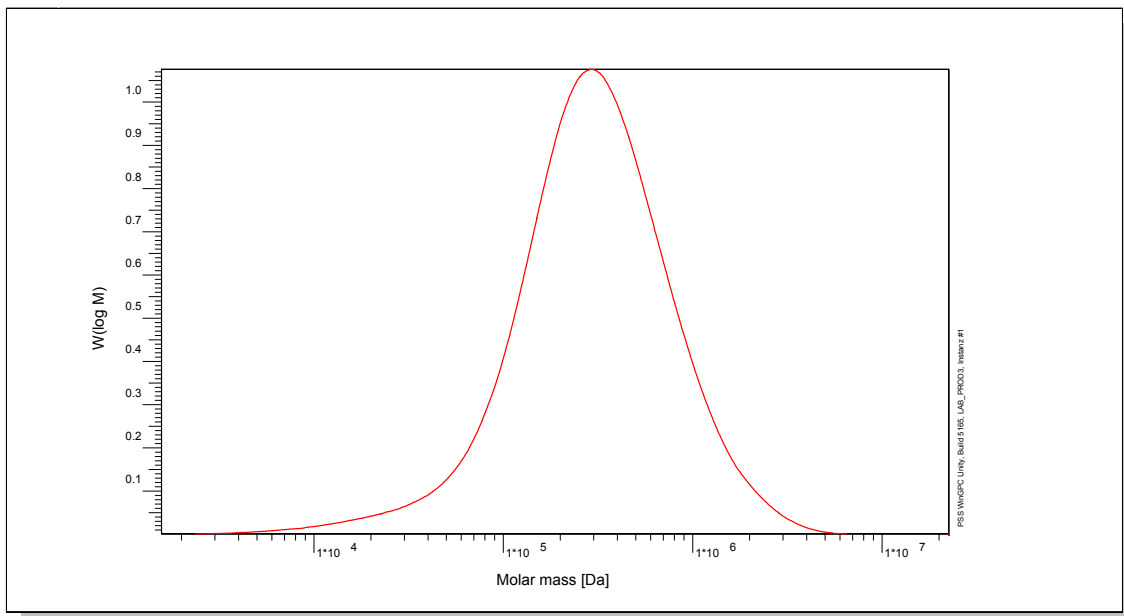


Certificate of Analysis

Polymer type: Poly(DADMAC)
 Part No: PSS-dad450k
 Lot No: I-115

Molar Mass Distribution



GPC/SEC - Conditions

Sample concentration	2,00 g/l	Inject volume	20 µl
Solvent	Sodium chloride 0.1M, TFAc 0.1Vol%	Flow rate	0,50 ml/min
Precolumn [8 x 50 mm]	PSS NOVEMA 10µm	Temperature	25,0° C
Columns [analytical, each 8 x 300 mm]	PSS NOVEMA 10µm 3 000Å	Operator	S. Fugmann
Data Acquisition Software	PSS WinGPC		

GPC/SEC - Results

Detector	Mw [Da]	Mn [Da]	Mp [Da]	PDI [Mw/Mn]
Agilent RID	450000	163000	-	2,77

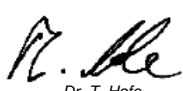
Note:

Mw = Weight average molecular weight
 Mn = Number average molecular weight
 Mp = Molar mass at the peak maximum
 PDI = Polydispersity Index

Storage: Store the tightly recapped polymer standard in a dry, dark, cool area; e.g. a refrigerator (4 °C).

Date of expiry: See product label.

Manufacture control according to PSS method of analysis


 Dr. T. Hofe
 production director

