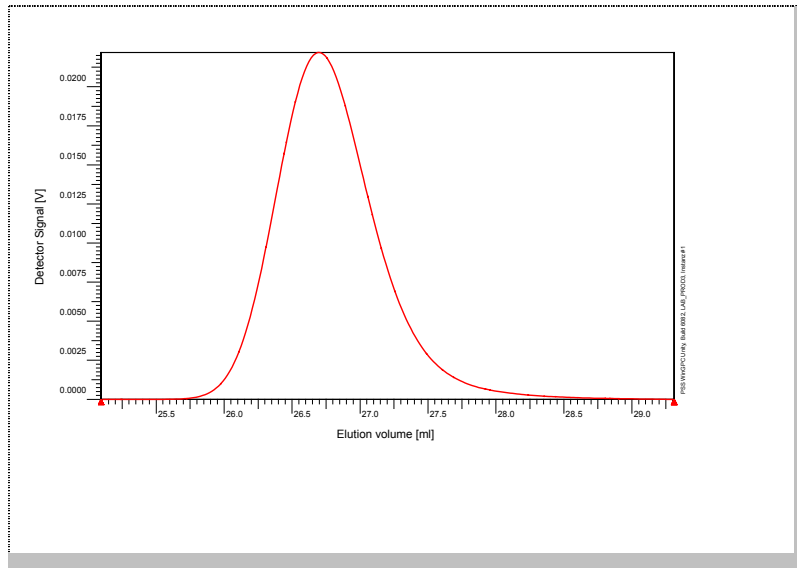


Certificate of Analysis

Polymer type: Poly(methyl methacrylate-b-n-butyl methacrylate)
 Part No: PSS-mmnb17k
 Lot No: mnbg4127

Elugramm



GPC/SEC – Conditions

Sample concentration	1,00 g/l	Inject volume	20 µl
Solvent	Tetrahydrofuran	Flow rate	1.00 ml/min
Temperature	23 °C		
Precolumn [8 x 50 mm]	PSS SDV 5µm		
Columns [analytical, each 8 x 300 mm]	PSS SDV 5µm 10e3Å / 10e5Å / 10e6Å		
Data Acquisition Software	PSS WinGPC	Operator	R. Leinweber

GPC/SEC – Results*

Detector	Mw (total) [Da]	Mw (m) [Da]	Mw (nb) [Da]	PDI (total) [Mw/Mn]
Agilent RID	16 600	8 300	8 300	1.03

* molar mass calculation based on monomer consumption

Copolymer - Composition	[w %]
Poly(methyl methacrylate)	-
Poly(n-butyl methacrylate)	-


Note:

Mw = Weight Average Molecular Weight
 Mn = Number Average Molecular Weight
 Mp = Molar Mass at the Peak Maximum
 PDI = Polydispersity Index

Storage: Store the tightly recapped polymer standard in a dry, dark, cool area; e.g. a refrigerator (4 °C).

Date of expiry: See product label.

Manufacture and control according to PSS method of analysis


 Dr. T. Hofe
 production director

