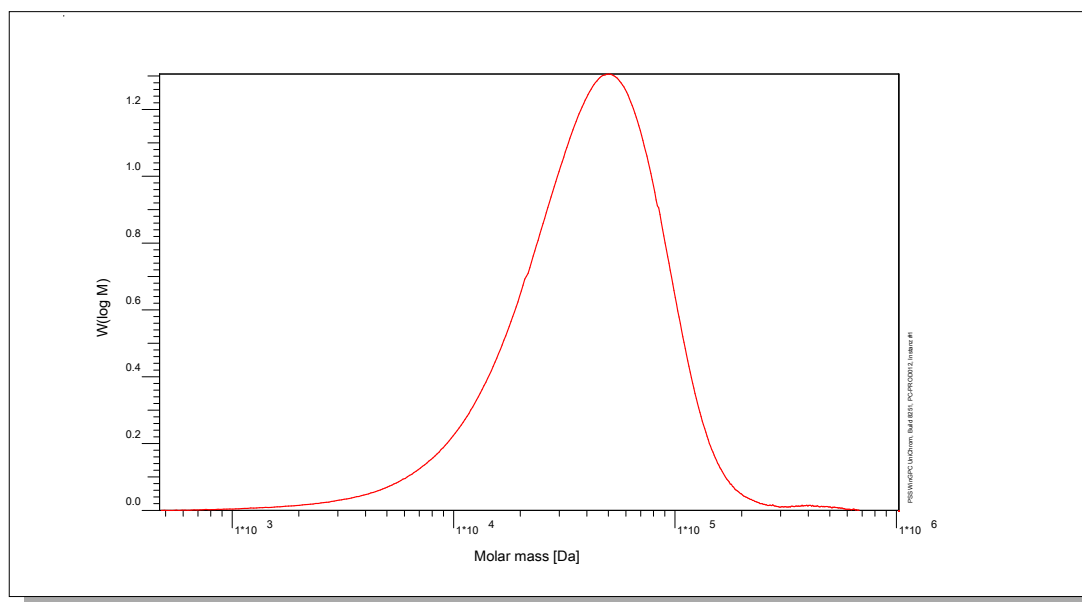


Certificate of Analysis

Polymer type: Poly(acrylic acid) sodium salt
 Part No: PSS-paa50k
 Lot No: paa20037

Molar Mass Distribution



GPC/SEC - Conditions

Sample concentration	1,00 g/l	Inject volume	50 µl
Flow rate	1,00 ml/min	Temperature	23 °C
Solvent	Water, 0.067M Na ₂ HPO ₄		
Precolumn [8 x 50 mm]	PSS SUPREMA 10µm		
Columns [analytical, each 8 x 300 mm]	PSS SUPREMA 10µm 100Å / 3 000Å / 3 000Å		
Data Acquisition Software	PSS WinGPC	Operator	J.Preis

GPC/SEC - Results

Detector	Mw [Da]	Mn [Da]	Mp [Da]	PDI [Mw/Mn]
PSS SECcurity RI	47300	26300	43100	1,80

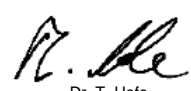
Note:

Mw = Weight average molecular weight
 Mn = Number average molecular weight
 Mp = Molar mass at the peak maximum
 PDI = Polydispersity Index

Storage: Store the tightly recapped polymer standard in a dry, dark, cool area; e.g. a refrigerator (4 °C).

Date of expiry: yyyy/mm/dd (See also product label)
Date of approval: yyyy/mm/dd

Manufacture and control according to PSS method of analysis



Dr. T. Hofe
production director

