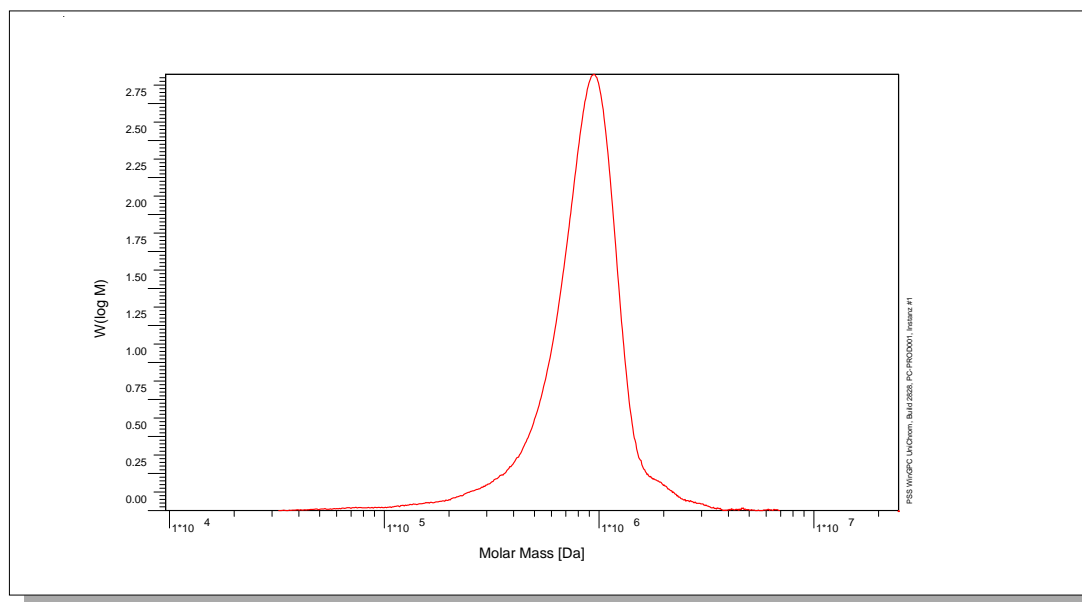


# Certificate of Analysis

Polymer type: Poly(acrylic acid) sodium salt  
 Part No: PSS-paa1m  
 Lot No: paa3037

## Molar Mass Distribution



## GPC/SEC - Conditions

Sample concentration	0,50 g/l	Inject volume	50 µl
Solvent	Water, 0.067M Na <sub>2</sub> HPO <sub>4</sub>	Flow rate	1,00 ml/min
Precolumn [8 x 50 mm]	PSS SUPREMA 10µm	Temperature	30 °C
Columns [analytical, each 8 x 300 mm]	PSS SUPREMA 10µm 100Å / 3000Å / 3000Å	Operator	J.Preis
Data Acquisition Software	PSS WinGPC		

## GPC/SEC - Results

Detector	Mw [Da]	Mn [Da]	Mp [Da]	PDI [Mw/Mn]
PSS SECcurity RI	897000	682000	935000	1,31

**Note:**

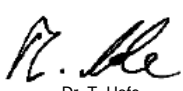
Mw = Weight average molecular weight  
 Mn = Number average molecular weight  
 Mp = Molar mass at the peak maximum  
 PDI = Polydispersity Index

**Storage:** Store the tightly recapped polymer standard in a dry, dark, cool area; e.g. a refrigerator (4 °C).

**Date of expiry:** yyyy/mm/dd (See also product label)

**Date of approval:** yyyy/mm/dd

Manufacture and control according to PSS method of analysis

  
 Dr. T. Hofe  
 production director

