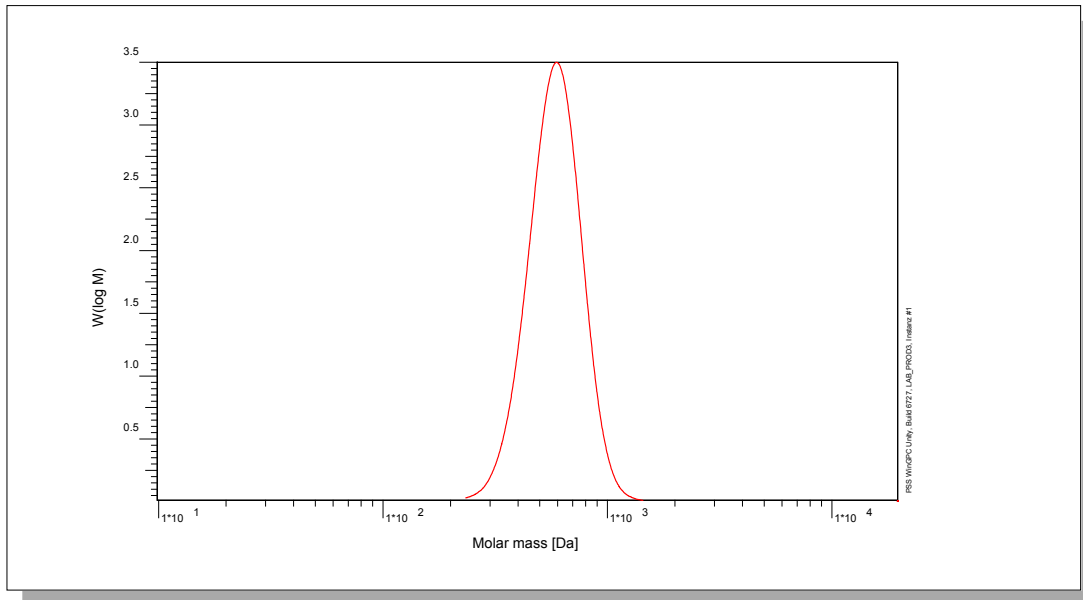


Certificate of Analysis

Polymer type: Poly(ethylene glycol)
 Part No: PSS-peg600
 Lot No: peg06-4

Molar Mass Distribution



GPC/SEC - Conditions

Sample concentration	2,00 g/l	Inject volume	20 µl
Solvent	Water, Sodium azide 0.02%	Flow rate	1,00 ml/min
Precolumn [8 x 50 mm]	PSS SUPREMA 10 µm	Temperature	35 °C
Columns [analytical, each 8 x 300 mm]	PSS SUPREMA 10µm 100Å / 3 000Å / 3 000Å	Operator	S.Fugmann
Data Acquisition Software	PSS WinGPC		

GPC/SEC - Results

Detector	Mw [Da]	Mn [Da]	Mp [Da]	PDI [mw/Mn]
Agilent RID	601	560	599	1,07

Additional Methods - Results

Method	Mn [Da]
Nuclear Magnetic Resonance spectroscopy	604

¹H-NMR (300MHz, CDCl₃)

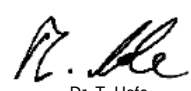
Mw = Weight average molecular weight
 Mn = Number average molecular weight
 Mp = Molar mass at the peak maximum
 PDI = Polydispersity Index

Storage: Store the tightly recapped polymer standard in a dry, dark, cool area; e.g. a refrigerator (4 °C).

Date of expiry: yyyy/mm/dd (See also product label.)

Date of approval: yyyy/mm/dd

Manufacture control according to PSS method of analysis


 Dr. T. Hofe
 production director

