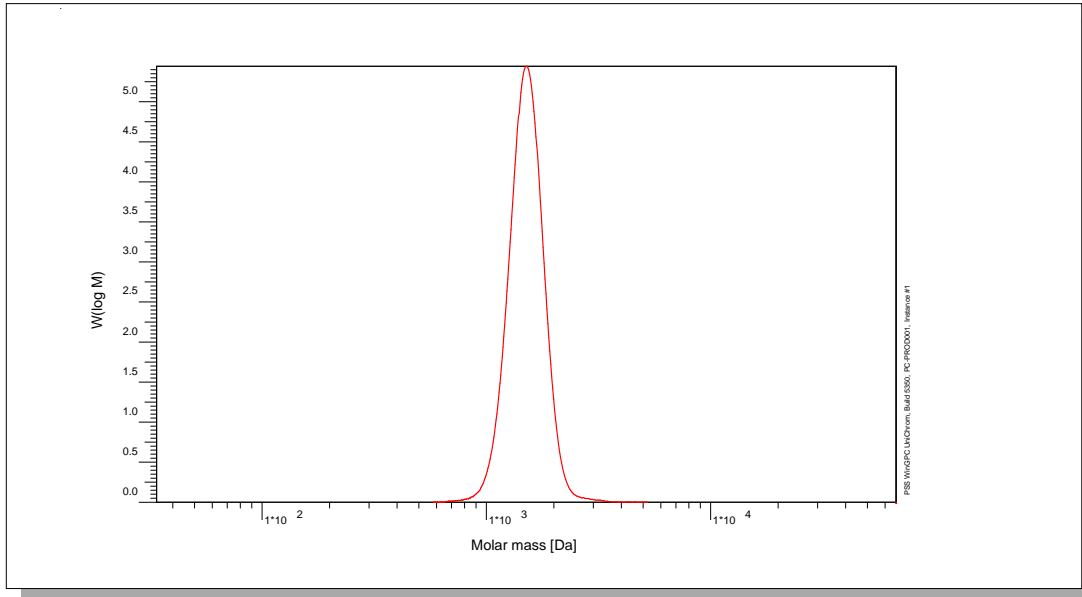


Certificate of Analysis

Polymer type: Poly(ethylene glycol)
 Part No: PSS-peg1.5k
 Lot No: peg081015

Molar Mass Distribution



GPC/SEC - Conditions

Sample concentration	1,00 g/l	Inject volume	20 µl
Solvent	Water, Sodium azide 0.2g/l	Flow rate	1,00 ml/min
Precolumn [8 x 50 mm]	PSS SUPREMA 5µm	Temperature	30 °C
Columns [analytical, each 8 x 300 mm]	PSS SUPREMA 5µm 100Å / 100Å / 100Å	Operator	J.Preis
Data Acquisition Software	PSS WinGPC		

GPC/SEC - Results

Detector	Mw [Da]	Mn [Da]	Mp [Da]	PDI [mw/Mn]
Agilent RID	1530	1480	1530	1,03

Additional Methods - Results

Method	Mn [Da]
Nuclear Magnetic Resonance spectroscopy	1420

¹H-NMR (300MHz, CDCl₃)

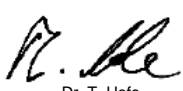
Mw = Weight average molecular weight
 Mn = Number average molecular weight
 Mp = Molar mass at the peak maximum
 PDI = Polydispersity Index

Storage: Store the tightly recapped polymer standard in a dry, dark, cool area; e.g. a refrigerator (4 °C).

Date of expiry: yyyy/mm/dd (See also product label.)

Date of approval: yyyy/mm/dd

Manufacture control according to PSS method of analysis


 Dr. T. Hofe
 production director

