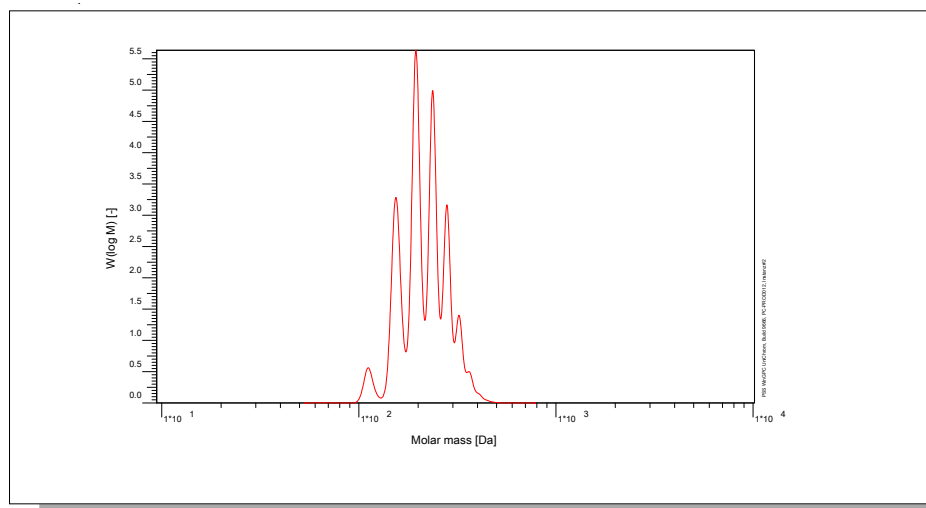


# Certificate of Analysis

Polymer type: Poly(ethylene glycol)  
 Part No: PSS-peg200  
 Lot No: peg150722

## Molar Mass Distribution



## GPC/SEC - Conditions

Sample concentration	1,00 g/l	Inject volume	20 µl
Solvent	Water, Sodium azide 0.2g/L	Flow rate	1,00 ml/min
Precolumn [8 x 50 mm]	PSS SUPREMA 5µm	Temperature	23 °C
Columns [analytical, each 8 x 300 mm]	PSS SUPREMA 5µm 100Å / 100Å / 100Å		
Data Acquisition Software	PSS WinGPC	Operator	A.Klein

## GPC/SEC - Results

Detector	Mw [Da]	Mn [Da]	Mp [Da]	PDI [Mw/Mn]
PSS SECcurity <sup>2</sup> RI	220	205	194	1,08

## Additional Methods - Results


Method	Mn [Da]
Nuclear Magnetic Resonance spectroscopy	198

<sup>1</sup>H-NMR (400MHz, CDCl<sub>3</sub>)

Mw = Weight average molecular weight  
 Mn = Number average molecular weight  
 Mp = Molar mass at the peak maximum  
 PDI = Polydispersity Index

**Storage:** Store the tightly recapped polymer standard in a dry, dark, cool area; e.g. a refrigerator (4 °C).  
**Date of expiry:** yyyy/mm/dd (See also product label.)  
**Date of approval:** yyyy/mm/dd

Manufacture control according to PSS method of analysis

  
 Dr. T. Hofe  
 production director