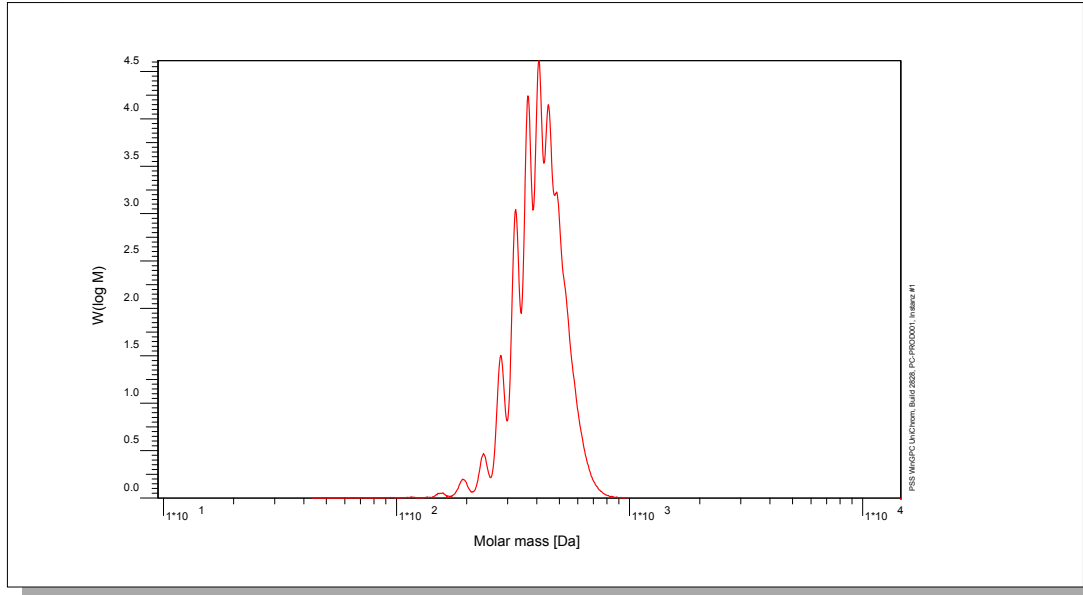


# Certificate of Analysis

Polymer type: Poly(ethylene glycol)  
 Part No: PSS-peg400  
 Lot No: peg181113

## Molar Mass Distribution



## GPC/SEC - Conditions

Sample concentration	1,00 g/l	Inject volume	20 µl
Solvent	Water, Sodium azide 0.2g/l	Flow rate	1,00 ml/min
Precolumn [8 x 50 mm]	PSS SUPREMA 5µm	Temperature	30 °C
Columns [analytical, each 8 x 300 mm]	PSS SUPREMA 5µm 100Å / 100Å / 100Å		
Data Acquisition Software	PSS WinGPC	Operator	J.Preis

## GPC/SEC - Results

Detector	Mw [Da]	Mn [Da]	Mp [Da]	PDI [mw/Mn]
Agilent RID	415	390	414	1,06

## Additional Methods - Results

Method	Mn [Da]
Nuclear Magnetic Resonance spectroscopy	378

<sup>1</sup>H-NMR (300MHz, CDCl<sub>3</sub>)

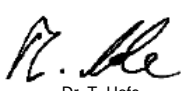
Mw = Weight average molecular weight  
 Mn = Number average molecular weight  
 Mp = Molar mass at the peak maximum  
 PDI = Polydispersity Index

**Storage:** Store the tightly recapped polymer standard in a dry, dark, cool area; e.g. a refrigerator (4 °C).

**Date of expiry:** yyyy/mm/dd (See also product label.)

**Date of approval:** yyyy/mm/dd

Manufacture control according to PSS method of analysis

  
 Dr. T. Hofe  
 production director

