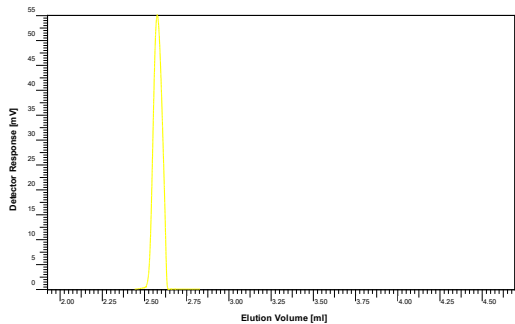


Certificate of Analysis

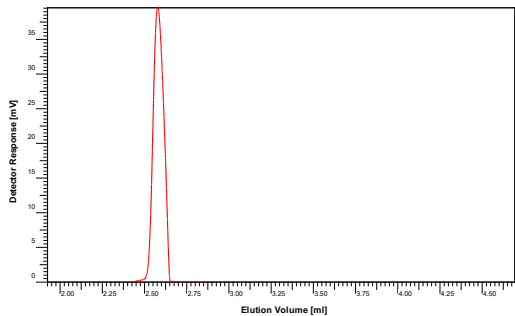
Product: LCCCValid Validation Kit
 Part No: PSS-pegkitval
 Lot No: pegkitval-01

LCCC - Elugram



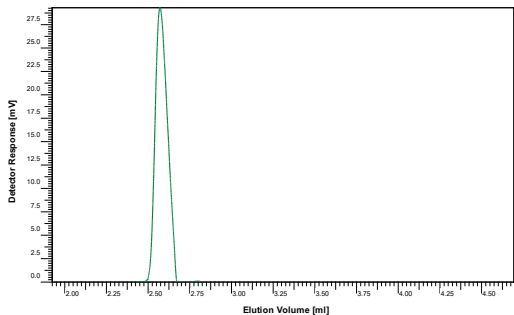
Colour code: Cap – yellow Vial - amber / white label

Lot No:	Mw [Da]	End groups		Mass [mg]
peg081015	1 530	-OH	-OH	1.50



Colour code: Cap – red Vial - amber / white label

Lot No:	Mw [Da]	End groups		Mass [mg]
peg040416	3 450	-OH	-OH	1.50



Colour code: Cap – green Vial - amber / white label

Lot No:	Mw [Da]	End groups		Mass [mg]
peg101015	5 890	-OH	-OH	1.50

LCCC – Conditions

Solvent Water/Acetonitril 54vol%/46vol%
 Flow rate 1.00 ml/min
 Column [4.6x250mm] LCCCValid
 Temperature 35°C
 Inject volume 25µL
 Data Acquisition PSS WinGPC
 software
 Operator J.Preis

For exact determination of sample concentration, we recommend to add the solvent volume precisely.

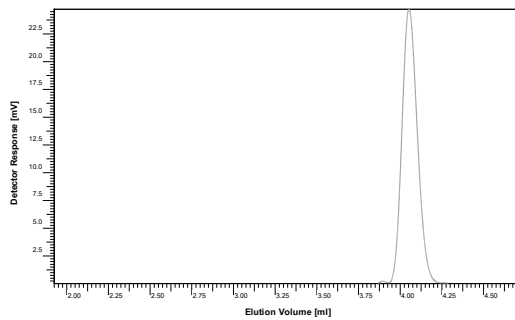
Level of eluent	full
Volume of eluent	1.5 ml
Concentration	1 g/l

Manufacture control according to PSS method of analysis



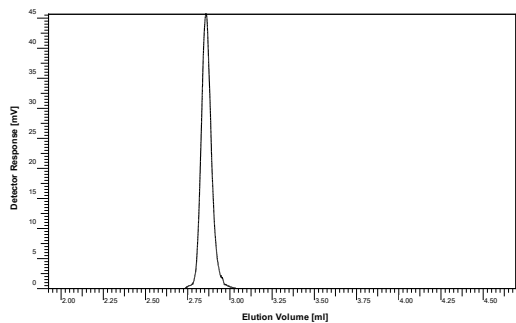
Dr. T. Hofe
production director

Product: LCCValid Validation Kit
 Part No: PSS-pegkitval
 Lot No: pegkitval-01



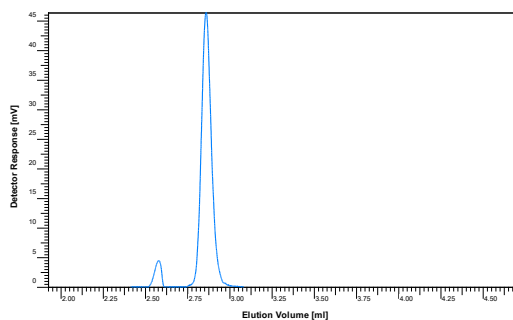
Colour code: Cap – white Vial - amber / white label

Lot No:	Mw [Da]	End groups		Mass [mg]
pega060618	2 070	-allyl	-OH	1.50



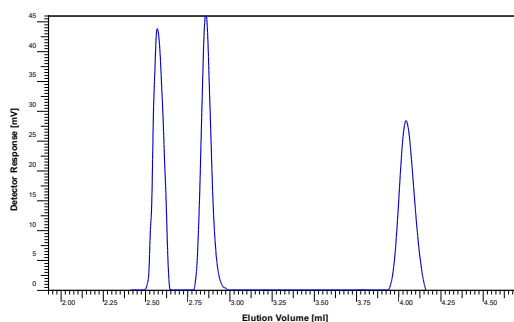
Colour code: Cap – black Vial - amber / white label

Lot No:	Mw [Da]	End groups		Mass [mg]
pegm010618	1 900	-methyl	-OH	1.50



Colour code: Cap – light blue Vial - amber / white label

Lot No:	Components			Mass [mg]
mixture 1	peg-OH	peg-methyl	-	0.17 / 1.53 / -



Colour code: Cap – dark blue Vial - amber / white label

Lot No:	Components			Mass [mg]
mixture 2	peg-OH	peg-methyl	peg-allyl	1.51 / 1.52 / 1.59