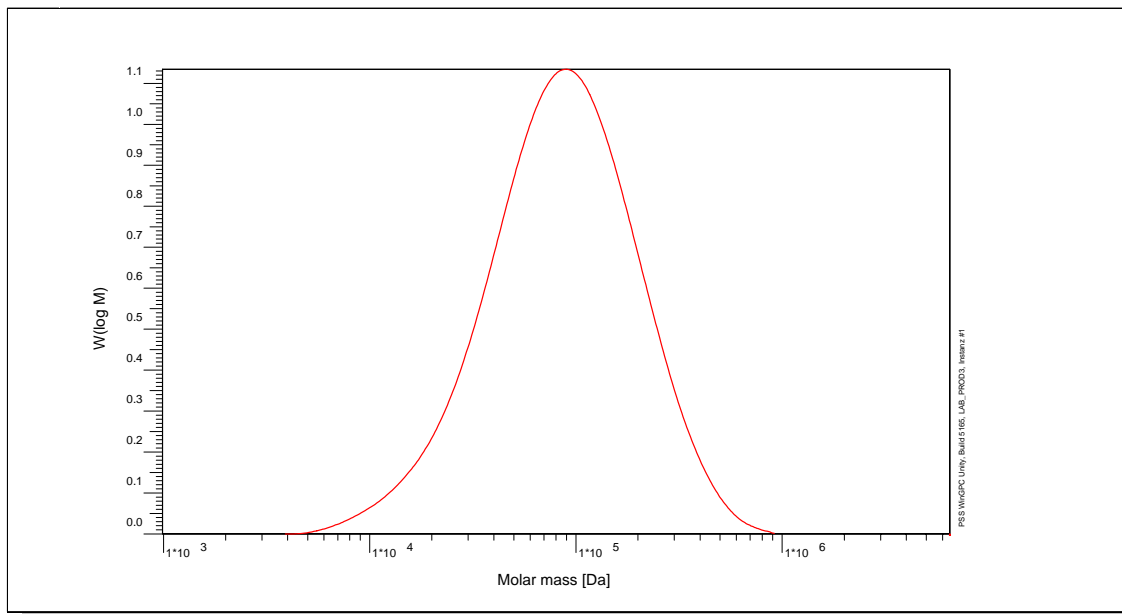


Certificate of Analysis

Polymer type: Poly(ethylene terephthalate)
 Part No: PSS-pet120k
 Lot No: pet10n

Molar Mass Distribution



GPC/SEC - Conditions

Sample concentration	2,00 g/l	Inject volume	50 µl
Solvent	HFIP, Potassium trifluoroacetate 0.05M	Flow rate	1,00 ml/min
Precolumn [8 x 50 mm]	PSS PFG 7µm	Temperature	23,0° C
Columns [analytical, each 8 x 300 mm]	PSS PFG 7µm linear M / linear M	Operator	F. Gores
Data Acquisition Software	PSS WinGPC		

GPC/SEC - Results

Detector	Mw [Da]	Mn [Da]	Mp [Da]	PDI [Mw/Mn]
Shodex RI71	115000	58700	87300	1,96

Note:


Mw = Weight Average Molecular Weight
 Mn = Number Average Molecular Weight
 Mp = Molar Mass at the Peak Maximum
 PDI = Polydispersity Index

Storage: Store the tightly recapped polymer standard in a dry, dark, cool area; e.g. a refrigerator (4 °C).

Date of expiry: yyyy/mm/dd (See also product label.)

Date of approval: yyyy/mm/dd

Manufacture control according to PSS method of analysis


 Dr. T. Hofe
 production director



PSS Polymer Standards Service GmbH
 In der Dalheimer Wiese 5
 55120 Mainz | Germany

Phone +49 6131 96239-0
Fax +49 6131 96239-11
E-Mail info@pss-polymer.com
Web www.pss-polymer.com

Polymer Standards Service-USA, Inc.
 160 Old Farm Rd, Suite A
 Amherst | MA 01002 | USA

Phone +1 413 835-0265
Fax +1 413 835-0354
E-Mail usa@pss-polymer.com
Web www.pss-polymer.com