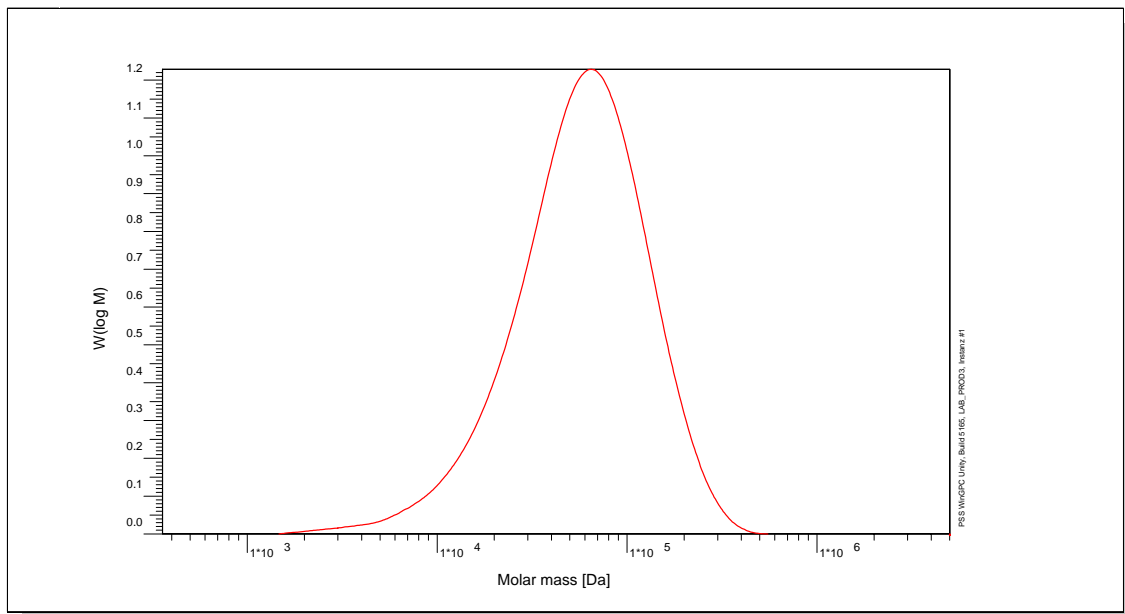


Certificate of Analysis

Polymer type: Poly(ethylene terephthalate)
 Part No: PSS-pet75k
 Lot No: pet9n

Molar Mass Distribution



GPC/SEC - Conditions

Sample concentration	2,00 g/l	Inject volume	50 µl
Solvent	HFIP, Potassium trifluoroacetate 0.05M	Flow rate	1,00 ml/min
Precolumn [8 x 50 mm]	PSS PFG 7µm	Temperature	23,0° C
Columns [analytical, each 8 x 300 mm]	PSS PFG 7µm linear M / linear M		
Data Acquisition Software	PSS WinGPC	Operator	F. Gores

GPC/SEC - Results

Detector	Mw [Da]	Mn [Da]	Mp [Da]	PDI [Mw/Mn]
Shodex RI71	73900	37700	63100	1,96

Note:


- Mw = Weight Average Molecular Weight
- Mn = Number Average Molecular Weight
- Mp = Molar Mass at the Peak Maximum
- PDI = Polydispersity Index

Storage: Store the tightly recapped polymer standard in a dry, dark, cool area; e.g. a refrigerator (4 °C).

Date of expiry: yyyy/mm/dd (See also product label.)

Date of approval: yyyy/mm/dd

Manufacture control according to PSS method of analysis


 Dr. T. Hofe
 production director

