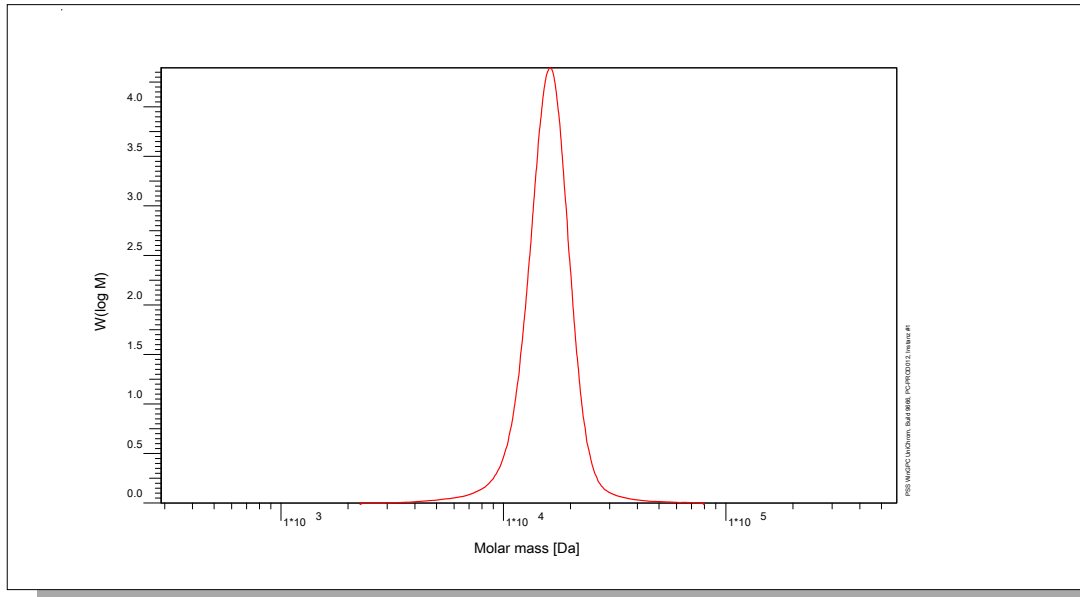


# Certificate of Analysis

Polymer type: Poly(isobutylene)  
 Part No: PSS-pib16k  
 Lot No: pib090617

## Molar Mass Distribution



## GPC/SEC - Conditions

Sample concentration	1,00 g/l	Inject volume	5 µl
Solvent	Tetrahydrofuran	Flow rate	0,33 ml/min
Precolumn [4.6 x 30 mm]	PSS SDV 5µm	Temperature	23 °C
Columns [micro, each 4.6 x 250 mm]	PSS SDV 5µm 10e3Å / 10e5Å / 10e6Å	Operator	A.Klein
Data Acquisition Software	PSS WinGPC		

## GPC/SEC - Results

Detector	Mw [Da]	Mn [Da]	Mp [Da]	PDI [Mw/Mn]
PSS SECcurity RI	16300	15200	16200	1,07

**Note:**

Mw = Weight average molecular weight  
 Mn = Number average molecular weight  
 Mp = Molar mass at the peak maximum  
 PDI = Polydispersity Index

**Storage:** Store the tightly recapped polymer standard in a dry, dark, cool area; e.g. a refrigerator (4 °C).

**Date of expiry:** yyyy/mm/dd (See also product label.)

**Date of approval:** yyyy/mm/dd

Manufacture and control according to PSS method of analysis



Dr. T. Hofe  
production director

