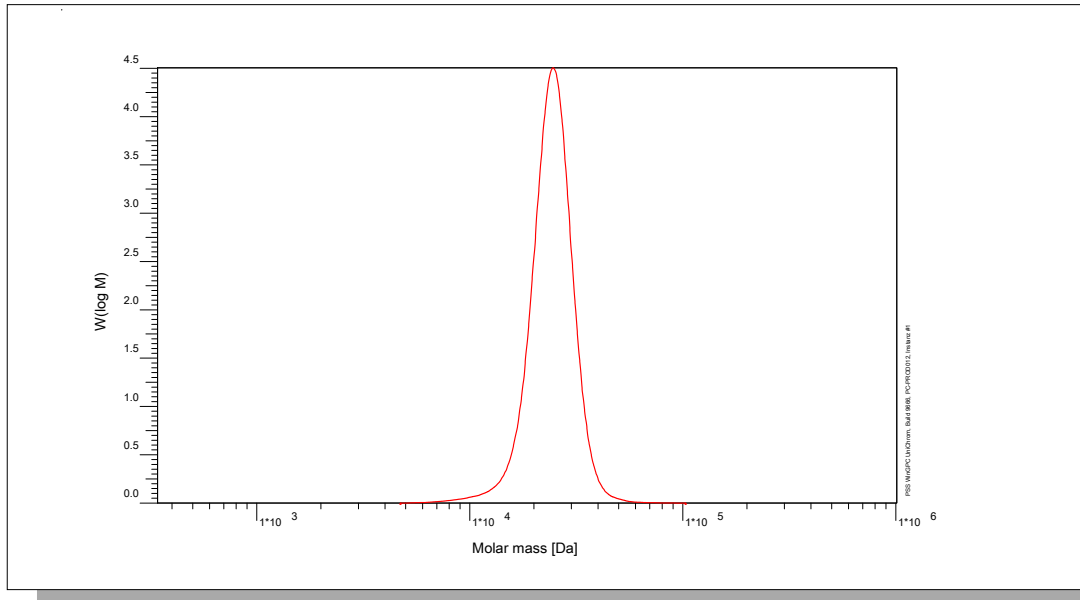


Certificate of Analysis

Polymer type: Poly(isobutylene)
 Part No: PSS-pib24k
 Lot No: pib120617

Molar Mass Distribution



GPC/SEC - Conditions

Sample concentration	1,00 g/l	Inject volume	5 µl
Solvent	Tetrahydrofuran	Flow rate	0,33 ml/min
Precolumn [4.6 x 30 mm]	PSS SDV 5µm	Temperature	23 °C
Columns [micro, each 4.6 x 250 mm]	PSS SDV 5µm 10e3Å / 10e5Å / 10e6Å	Operator	A.Klein
Data Acquisition Software	PSS WinGPC		

GPC/SEC - Results

Detector	Mw [Da]	Mn [Da]	Mp [Da]	PDI [Mw/Mn]
PSS SECcurity RI	24800	23300	24600	1,06

Note:

Mw = Weight average molecular weight
 Mn = Number average molecular weight
 Mp = Molar mass at the peak maximum
 PDI = Polydispersity Index

Storage: Store the tightly recapped polymer standard in a dry, dark, cool area; e.g. a refrigerator (4 °C).

Date of expiry: yyyy/mm/dd (See also product label.)

Date of approval: yyyy/mm/dd

Manufacture and control according to PSS method of analysis



Dr. T. Hofe
production director

