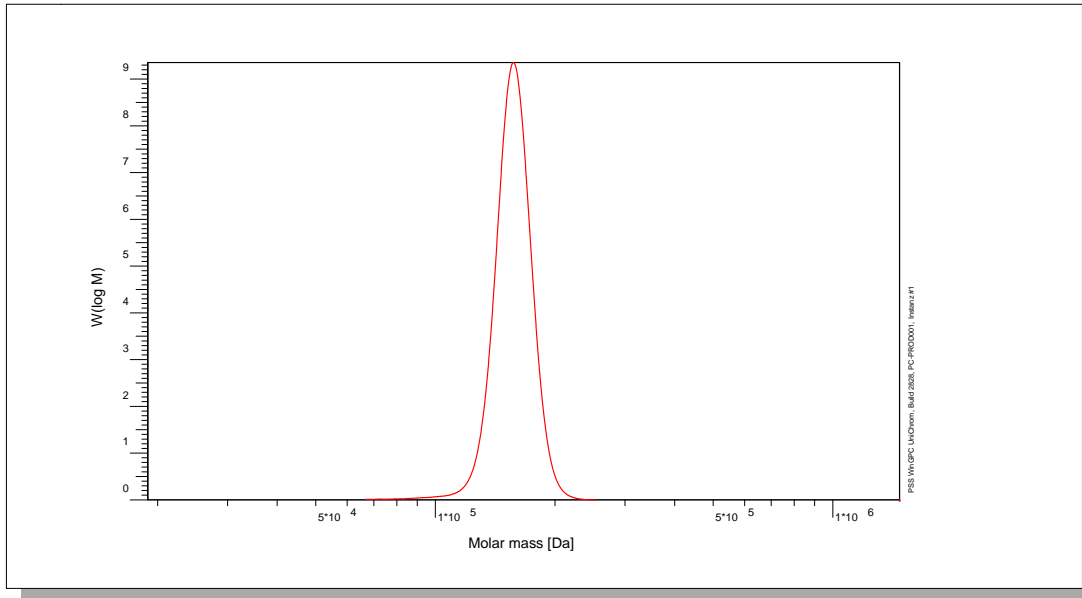


Certificate of Analysis

Polymer type: Poly(isoprene-1.4)
 Part No: PSS-pio150k
 Lot No: pio090904

Molar Mass Distribution



GPC/SEC - Conditions

| | | | |
|---------------------------------------|-----------------------------------|---------------|-------------|
| Sample concentration | 1,00 g/l | Inject volume | 20 µl |
| Solvent | THF | Flow rate | 1,00 ml/min |
| Precolumn [8 x 50 mm] | PSS SDV 5µm | Temperature | 23 °C |
| Columns [analytical, each 8 x 300 mm] | PSS SDV 5µm 10e3Å / 10e5Å / 10e6Å | | |
| Data Acquisition Software | PSS WinGPC | Operator | S. Fugmann |

GPC/SEC - Results

| Detector | Mw [Da] | Mn [Da] | Mp [Da] | PDI [Mw/Mn] |
|--------------|---------|---------|---------|-------------|
| Shodex RI 71 | 157000 | 155000 | 157000 | 1,01 |

Additional Methods - Results

| Method | Mw [Da] |
|-------------------------------------|---------|
| Light Scattering, on-line (SLD7x00) | 150000 |

Mw = Weight average molecular weight
 Mn = Number average molecular weight
 Mp = Molar mass at the peak maximum
 PDI = Polydispersity Index

Light Scattering run on-line, based on Toluene Rayleigh Ratio $R = 1.404 \cdot 10^{-5} \text{ cm}^{-1}$ at 633 nm.
 System and instrument validation based on Certified Reference Materials Poly(styrene) Lot No: ERM-FA001.

| | |
|----------------------|------------|
| Sample concentration | 1.0194 g/L |
| Inject volume | 100µL |
| Sample dn/dc | 0.111mL/g |

Microstructure of the polymer (estimated uncertainty: +/- 5%):

Poly(isoprene-3.4) 7%
 Poly(isoprene-1.4) 93%

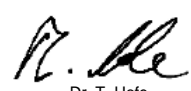
Polymer stabilized with 0.1% BHT.

Storage: Store the tightly recapped polymer standard in a dry, dark, cool area; e.g. a refrigerator (4 °C).

Date of expiry: yyyy/mm/dd (See also product label.)

Date of approval: yyyy/mm/dd

Manufacture and control according to PSS method of analysis


 Dr. T. Hofe
 production director

