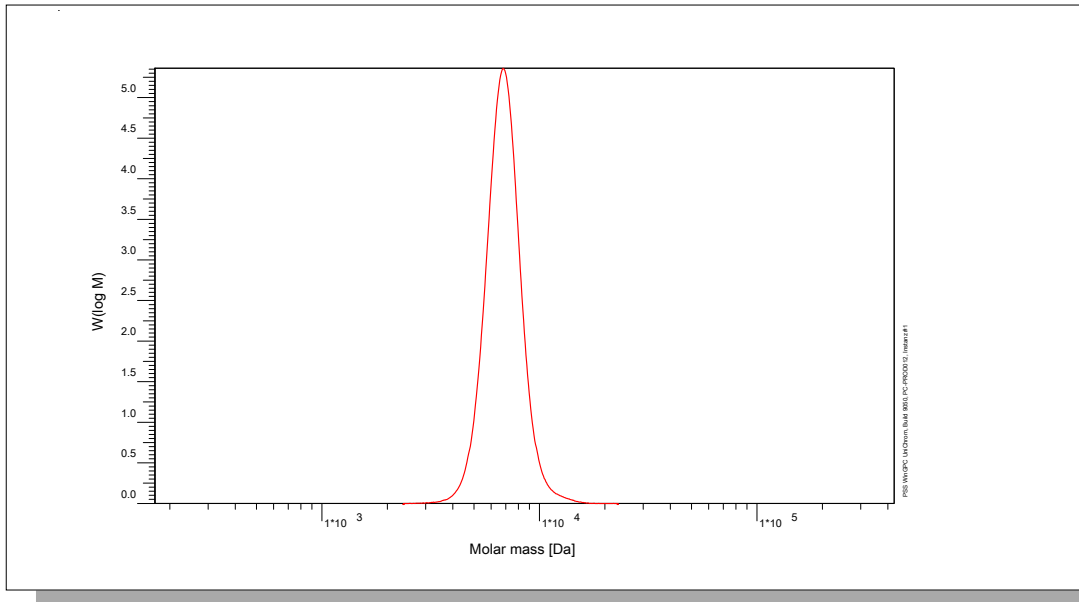


Certificate of Analysis

Polymer type: Poly(isoprene-1.4)
 Part No: PSS-pio7.5k
 Lot No: pio150115

Molar Mass Distribution



GPC/SEC - Conditions

Sample concentration	1,00 g/l	Inject volume	20 µl
Solvent	Tetrahydrofuran	Flow rate	1,00 ml/min
Precolumn [8 x 50 mm]	PSS SDV 5µm	Temperature	23 °C
Columns [analytical, each 8 x 300 mm]	PSS SDV 5µm 10e3Å / 10e5Å / 10e6Å	Operator	A.Klein
Data Acquisition Software	PSS WinGPC		

GPC/SEC - Results

Detector	Mw [Da]	Mn [Da]	Mp [Da]	PDI [Mw/Mn]
SECcurity RID	6990	6720	6840	1,04

Additional Methods - Results

Method	Mw [Da]
Light Scattering, on-line (SLD7x00)	6540

Mw = Weight average molecular weight
 Mn = Number average molecular weight
 Mp = Molar mass at the peak maximum
 PDI = Polydispersity Index

Light Scattering run on-line.

System and instrument validation based on Certified Reference Materials Poly(styrene) Lot No: ERM-FA001.

Sample concentration 10.0248 g/L
 Inject volume 100µL
 Sample dn/dc 0.111mL/g

Polymer stabilized with 0.1% BHT.

Microstructure of the polymer (estimated uncertainty: +/- 5%):

Poly(isoprene-3.4) 6 %
 Poly(isoprene-1.4) 94 %

Storage: Store the tightly recapped polymer standard in a dry, dark, cool area; e.g. a refrigerator (4 °C).

Date of expiry: yyyy/mm/dd (See also product label.)

Date of approval: yyyy/mm/dd

Manufacture and control according to PSS method of analysis



Dr. T. Hofe
 production director

