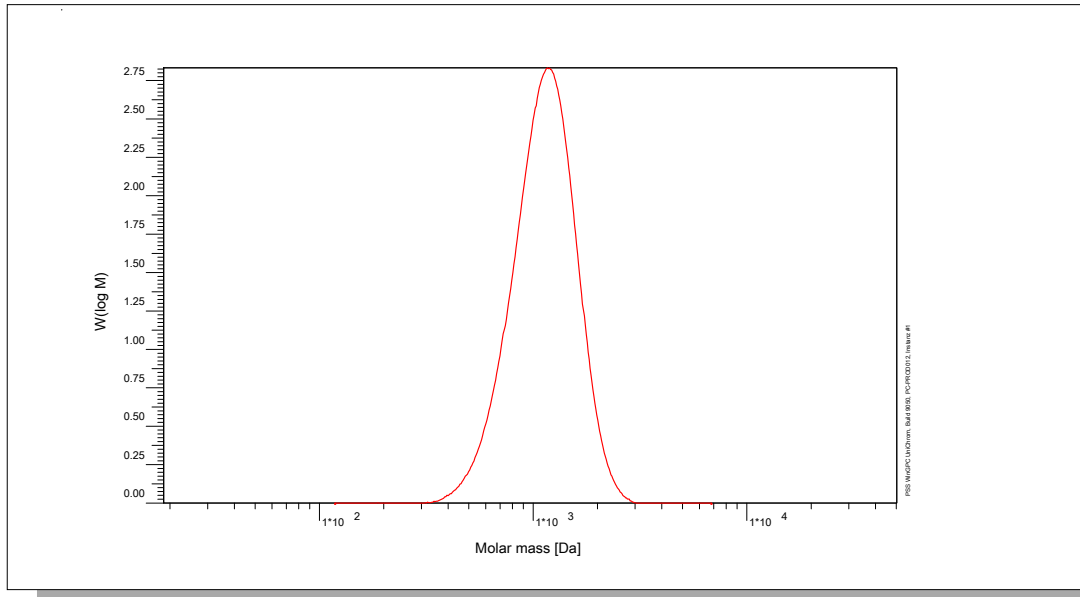


# Certificate of Analysis

Polymer type: Poly(isoprene-1.4)  
 Part No: PSS-pio1.2k  
 Lot No: pio230221

## Molar Mass Distribution



## GPC/SEC - Conditions

Sample concentration	1,00 g/l	Inject volume	20 µl
Solvent	Tetrahydrofuran	Flow rate	1,00 ml/min
Precolumn [8 x 50 mm]	PSS SDV 5µm	Temperature	23 °C
Columns [analytical, each 8 x 300 mm]	PSS SDV 5µm 10e3Å / 10e5Å / 10e6Å	Operator	A.Klein
Data Acquisition Software	PSS WinGPC		

## GPC/SEC - Results

Detector	Mw [Da]	Mn [Da]	Mp [Da]	PDI [Mw/Mn]
SECcurity RID	1170	1050	1160	1,12

## Additional Methods - Results

Method	Mn [Da]
Nuclear Magnetic Resonance spectroscopy	971

<sup>1</sup>H-NMR (300MHz, CDCl<sub>3</sub>)

### Note:

Mw = Weight average molecular weight  
 Mn = Number average molecular weight  
 Mp = Molar mass at the peak maximum  
 PDI = Polydispersity Index

### Microstructure of the polymer (estimated uncertainty: +/- 5%):

Poly(isoprene-3.4) 7 %  
 Poly(isoprene-1.4) 93 %


Polymer stabilized with 0.1% BHT.

**Storage:** Store the tightly recapped polymer standard in a dry, dark, cool area; e.g. a refrigerator (4 °C).

**Date of expiry:** yyyy/mm/dd (See also product label.)

**Date of approval:** yyyy/mm/dd

Manufacture and control according to PSS method of analysis

  
 Dr. T. Hofe  
 production director

