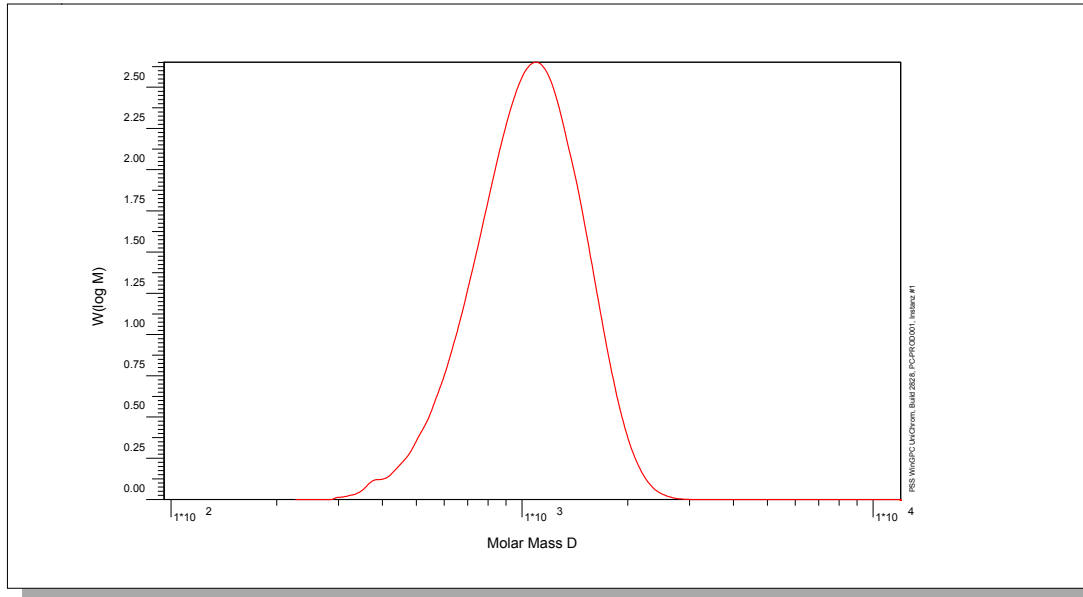


Certificate of Analysis

Polymer type: Poly(isoprene-3.4)
 Part No: PSS-pit1k
 Lot No: pit1,2-6n

Molar Mass Distribution



GPC/SEC - Conditions

Sample concentration	2,00 g/l	Inject volume	20 µl
Solvent	THF	Flow rate	1,00 ml/min
Precolumn [8 x 50 mm]	PSS SDV 5µm	Temperature	23 °C
Columns [analytical, each 8 x 300 mm]	PSS SDV 5µm 100Å / 1 000Å		
Data Acquisition Software	PSS WinGPC	Operator	S. Fugmann

GPC/SEC - Results

Detector	Mw [Da]	Mn [Da]	Mp [Da]	PDI [Mw/Mn]
Shodex RI 71	1090	967	1140	1,13

Additional Methods - Results

Method	Mn [Da]
Nuclear Magnetic Resonance spectroscopy	973

¹H-NMR (300MHz, CDCl₃)

Note:

Mw = Weight average molecular weight
 Mn = Number average molecular weight
 Mp = Molar mass at the peak maximum
 PDI = Polydispersity Index

Microstructure of the polymer (estimated uncertainty: +/- 5%):

Poly(isoprene-3.4) 65%
 Poly(isoprene-1.4) 11%
 Poly(isoprene-1.2) 24%

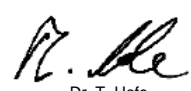
Polymer without stabilisator.

Storage: Store the tightly recapped polymer standard in a dry, dark, cool area; e.g. a refrigerator (4 °C).

Date of expiry: yyyy/mm/dd (See also product label.)

Date of approval: yyyy/mm/dd

Manufacture and control according to PSS method of analysis



Dr. T. Hofe
production director

