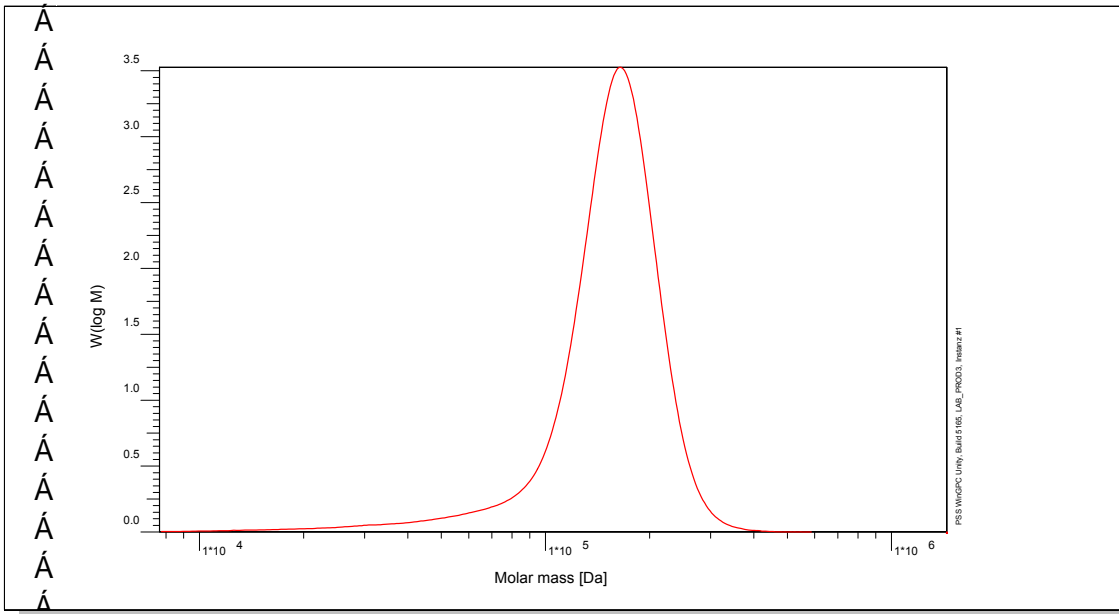


Certificate of Analysis

Polymer type: Poly(methacrylic acid) sodium salt
Part No: PSS-pma160k
Lot No: pma020905-2

Molar Mass Distribution



GPC/SEC - Conditions

Sample concentration	1,00 g/l	Inject volume	20 µl
Solvent	Water, Disodium hydrogen phosphate 0.067M	Flow rate	1,00 ml/min
Precolumn [8 x 50 mm]	PSS SUPREMA 10µm	Temperature	25,0° C
Columns [analytical, each 8 x 300 mm]	PSS SUPREMA 10µm 100Å / 3 000Å / 3 000Å	Operator	J.Preis
Data Acquisition Software	PSS WinGPC		

GPC/SEC - Results

Detector	Mw [Da]	Mn [Da]	Mp [Da]	PDI [Mw/Mn]
PSS SECcurity RI	163000	-	163000	< 1,20

Parent Poly(t- butyl methacrylate) Molecular Weight: Mw [Da] = 214 000 Mn [Da] = 212 000 Mp [Da] = 214 000 PDI = 1.01

T...
 T) ...
 T) ...
 UO...

G...
 A...

Date of expiry: yyyy/mm/dd (See also product label.)

Date of approval: yyyy/mm/dd

Manufacture and control according to PSS method of analysis

Dr. T. Hofe
 production director

