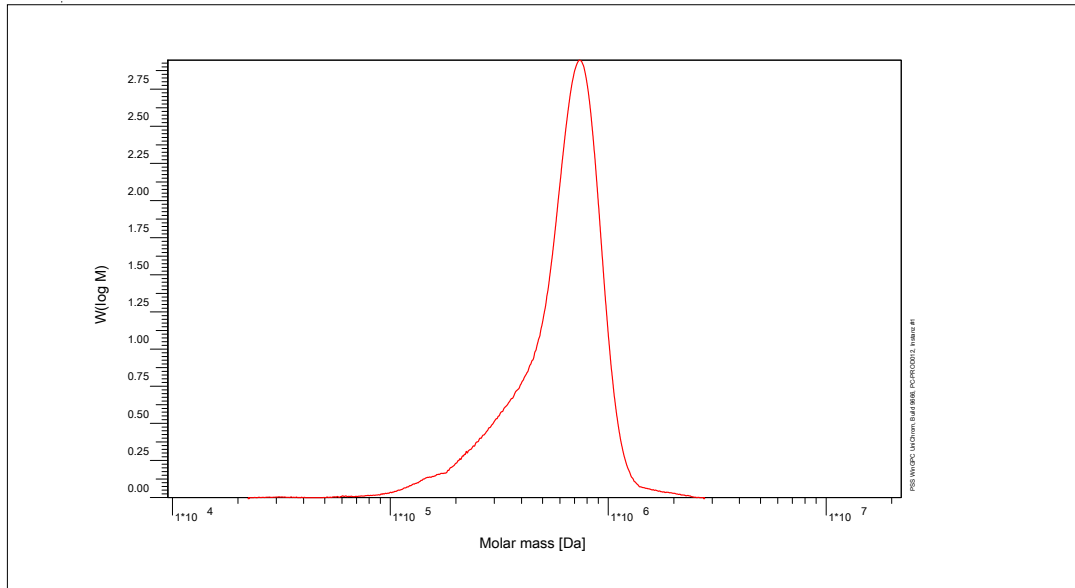


# Certificate of Analysis

Polymer type: Poly(methacrylic acid) sodium salt  
 Part No: PSS-pma870k  
 Lot No: pma25037n-2

## Molar Mass Distribution



## GPC/SEC - Conditions

|                                       |  |               |             |
|---------------------------------------|--|---------------|-------------|
| Sample concentration                  | 1,00 g/l   | Inject volume | 20 µl       |
| Solvent                               | Water, Disodium hydrogen phosphate 0.067M          | Flow rate     | 1,00 ml/min |
| Precolumn [8 x 50 mm]                 | PSS SUPREMA 10µm                                   | Temperature   | 23 °C       |
| Columns [analytical, each 8 x 300 mm] | PSS SUPREMA 10µm ultrahigh / ultrahigh / ultrahigh | Operator      | J.Preis     |
| Data Acquisition Software             | PSS WinGPC   |               |             |

## GPC/SEC - Results

| Detector         | Mw [Da] | Mn [Da] | Mp [Da] | PDI [Mw/Mn] |
|------------------|---------|---------|---------|-------------|
| PSS SECcurity RI | 749000  | -       | 871000  | < 1.20      |

Parent Poly(t-butyl methacrylate) Molecular Weight: Mw [Da] = 985 000 Mn [Da] = 903 000 Mp [Da] = 1 146 000 PDI = 1.09

### Note:

Mw = Weight average molecular weight  
 Mn = Number average molecular weight  
 Mp = Molar mass at the peak maximum  
 PDI = Polydispersity Index

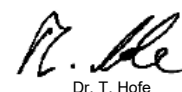
The Molecular Weights are calculated from the Poly(t-butyl methacrylate) standard with the factor 0.76

**Storage:** Store the tightly recapped polymer standard in a dry, dark, cool area; e.g. a refrigerator (4 °C).

**Date of expiry:** yyyy/mm/dd (See also product label.)

**Date of approval:** yyyy/mm/dd

Manufacture and control according to PSS method of analysis



Dr. T. Hofe  
production director

