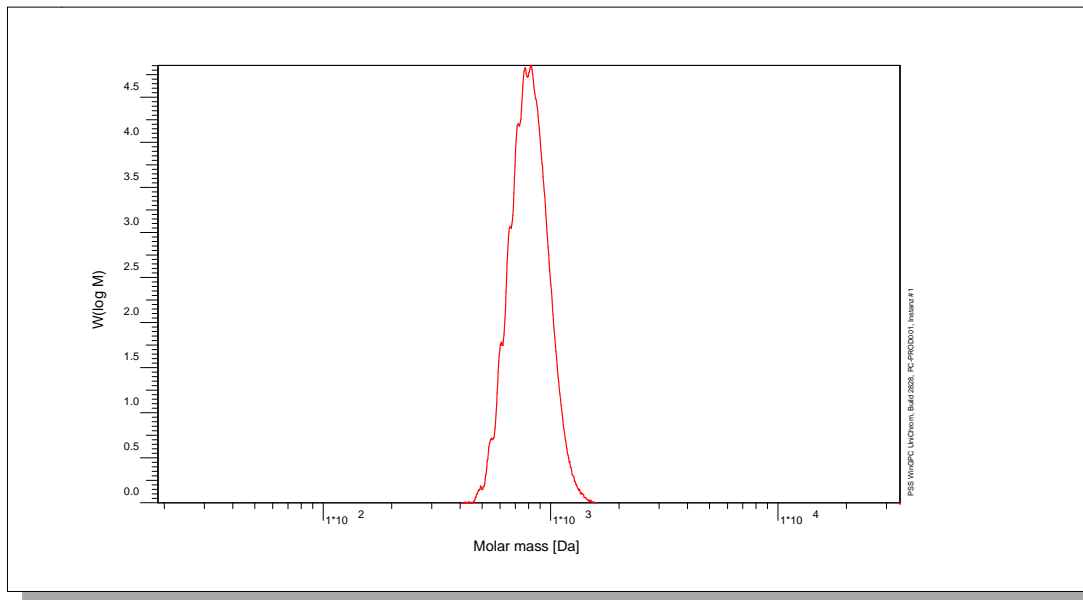


# Certificate of Analysis

Polymer type: Poly(propylene glycol)  
 Part No: PSS-ppg790  
 Lot No: ppg261014

## Molar Mass Distribution



## GPC/SEC - Conditions

Sample concentration	1,00 g/l	Inject volume	20 µl
Solvent	Tetrahydrofuran	Flow rate	1,00 ml/min
Precolumn [8 x 50 mm]	PSS SDV 3µm	Temperature	23 °C
Columns [analytical, each 8 x 300 mm]	PSS SDV 3µm 50Å / 100Å / 100Å		
Data Acquisition Software	PSS WinGPC	Operator	J.Preis

## GPC/SEC - Results

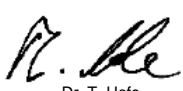
Detector	Mw [Da]	Mn [Da]	Mp [Da]	PDI [Mw/Mn]
Agilent RID	817	789	830	1,04

**Note:**

Mw = Weight average molecular weight  
 Mn = Number average molecular weight  
 Mp = Molar mass at the peak maximum  
 PDI = Polydispersity Index

**Storage:** Store the tightly recapped polymer standard in a dry, dark, cool area; e.g. a refrigerator (4 °C).  
**Date of expiry:** See product label.

Manufacture control according to PSS method of analysis

  
 Dr. T. Hofe  
 production director

