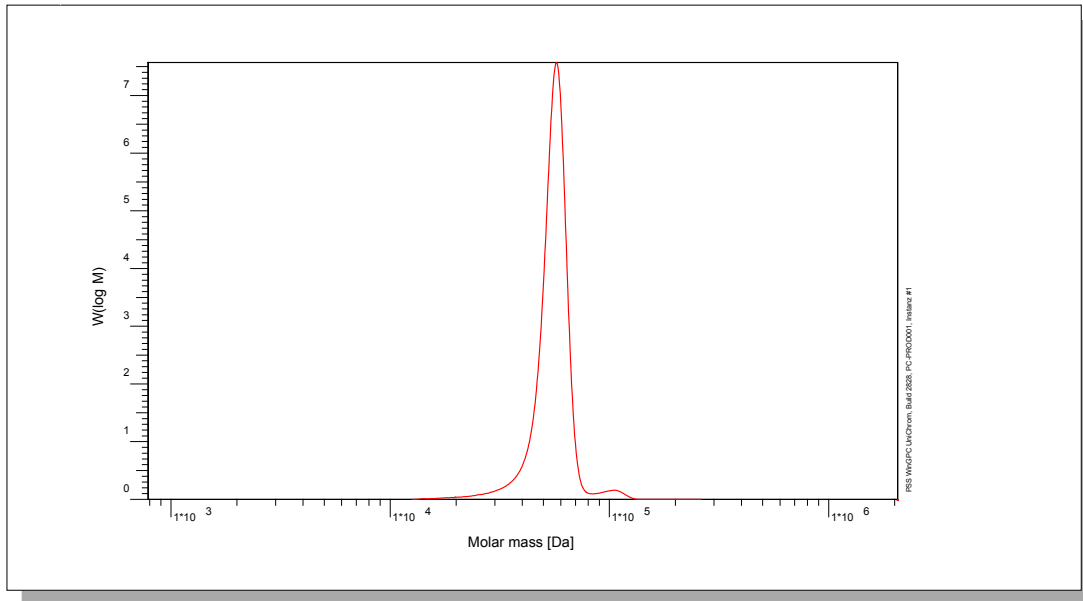


Certificate of Analysis

Polymer type: Poly(styrene) with thiol end group
 Part No: PSS-pslt56.2k
 Lot No: ps290513thiol

Molar Mass Distribution



GPC/SEC - Conditions

Sample concentration	1,00 g/l	Inject volume	20 µl
Solvent	Tetrahydrofuran	Flow rate	1,00 ml/min
Precolumn [8 x 50 mm]	PSS SDV 5µm	Temperature	23 °C
Columns [analytical, each 8 x 300 mm]	PSS SDV 5µm 10e3A / 10e5A / 10e6A		
Data Acquisition Software	PSS WinGPC	Operator	J.Preis

GPC/SEC - Results

Detector	Mw [Da]	Mn [Da]	Mp [Da]	PDI [Mw/Mn]
Agilent RID	56200	53600	57400	1,05

Note:

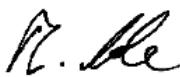
Mw = Weight average molecular weight
 Mn = Number average molecular weight
 Mp = Molar mass at the peak maximum
 PDI = Polydispersity Index

GPC/SEC results based on Poly(styrene) calibration.

Thiol end-functionalization: >90%

Storage: Store the tightly recapped polymer standard in a dry, dark, cool area; e.g. a refrigerator (4 °C).
Date of expiry: See product label.

Manufacture and control according to PSS method of analysis


 Dr. T. Hofe
 production director

