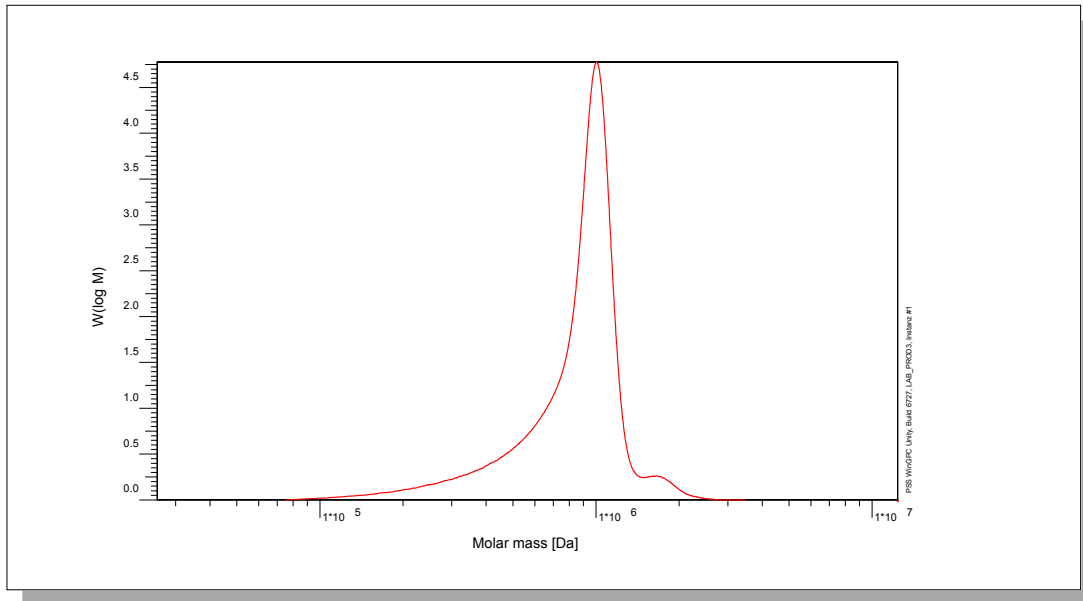


Certificate of Analysis

Polymer type: Poly(styrene-d8)
 Part No: PSS-psde938k
 Lot No: psd81026n

Molar Mass Distribution



GPC/SEC - Conditions

Sample concentration	0,60 g/l	Inject volume	20 µl
Solvent	THF	Flow rate	0,50 ml/min
Precolumn [8 x 50 mm]	PSS SDVe 10µm	Temperature	23 °C
Columns [analytical, each 8 x 300 mm]	PSS SDVe 10µm 10e5Å / 10e5Å	Operator	S. Fugmann
Data Acquisition Software	PSS WinGPC		

GPC/SEC - Results

Detector	Mw [Da]	Mn [Da]	Mp [Da]	PDI [Mw/Mn]
Shodex RI 71	938000	745000	1070000	1,26

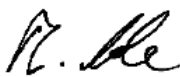
GPC/SEC - Results based on prot. Poly(styrene) calibration and were multiplied with the factor 1.07

Note:

Mw = Weight average molecular weight
 Mn = Number average molecular weight
 Mp = Molar mass at the peak maximum
 PDI = Polydispersity Index

Storage: Store the tightly recapped polymer standard in a dry, dark, cool area; e.g. a refrigerator (4 °C).
Date of expiry: See product label.

Manufacture and control according to PSS method of analysis


 Dr. T. Hofe
 production director

