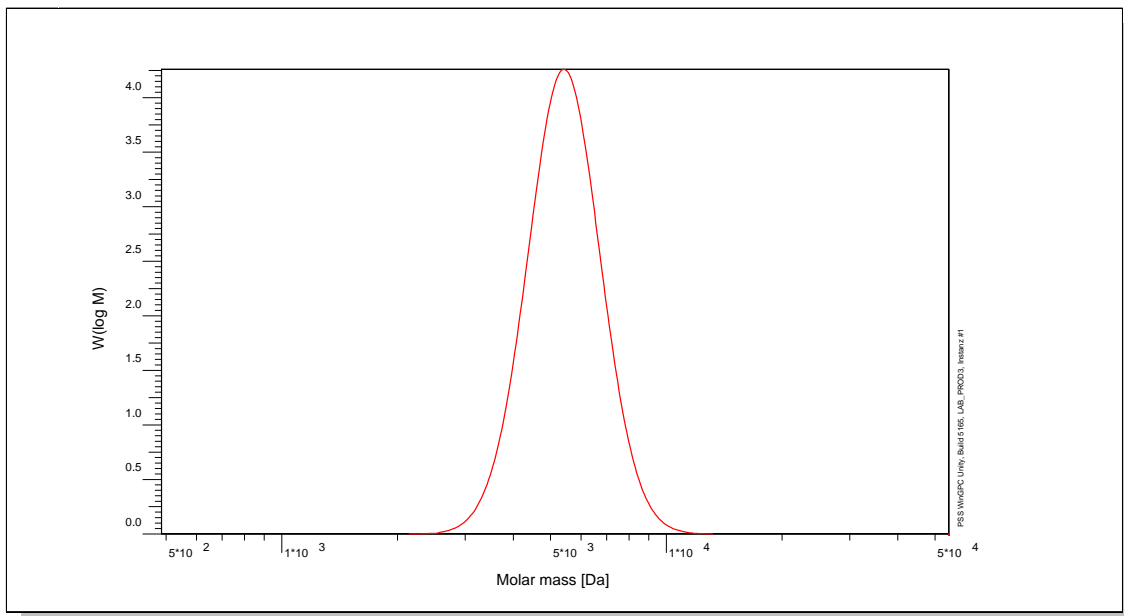


# Certificate of Analysis

Polymer type: Poly(styrene-d8)  
 Part No: PSS-psde6k  
 Lot No: psd8210605

## Molar Mass Distribution



## GPC/SEC - Conditions

Sample concentration	1,00 g/l	Inject volume	20 µl
Solvent	Tetrahydrofuran	Flow rate	1,00 ml/min
Precolumn [8 x 50 mm]	PSS SDV 5µm	Temperature	23,0° C
Columns [analytical, each 8 x 300 mm]	PSS SDV 5µm 10e3Å / 10e5Å / 10e6Å	Operator	S. Fugmann
Data Acquisition Software	PSS WinGPC		

## GPC/SEC - Results

Detector	Mw [Da]	Mn [Da]	Mp [Da]	PDI [Mw/Mn]
Shodex RI 71	5940	5660	5750	1,05

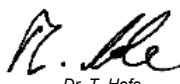
**Note:**

Mw = Weight average molecular weight  
 Mn = Number average molecular weight  
 Mp = Molar mass at the peak maximum  
 PDI = Polydispersity Index

**Storage:** Store the tightly recapped polymer standard in a dry, dark, cool area; e.g. a refrigerator (4 °C).

**Date of expiry:** See product label.

Manufacture and control according to PSS method of analysis

  
 Dr. T. Hofe  
 production director

