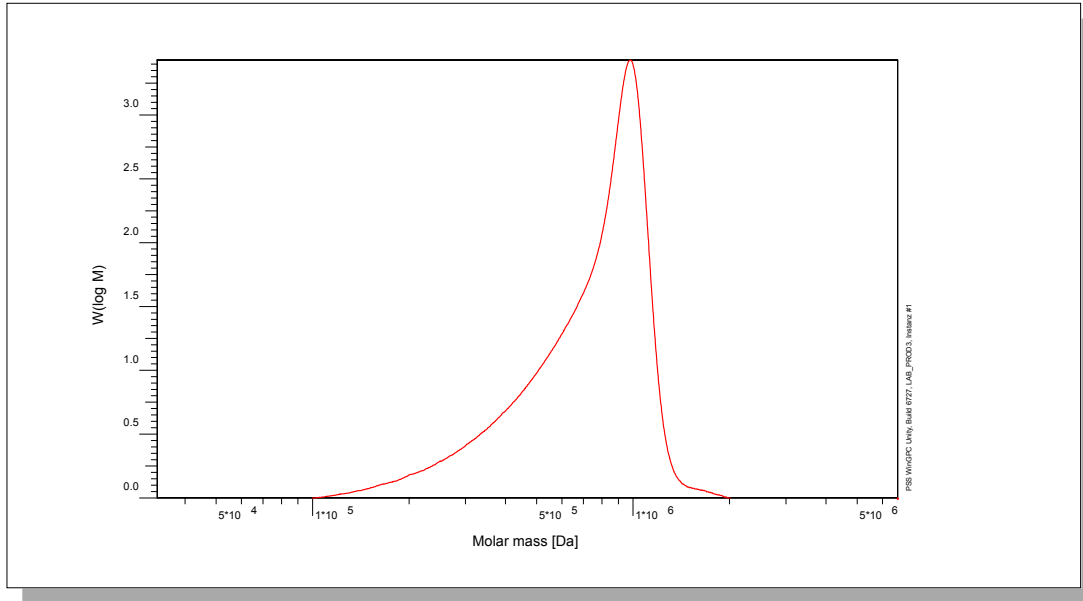


# Certificate of Analysis

Polymer type: Poly(styrene-d8)  
 Part No: PSS-psde807k  
 Lot No: psde220300

## Molar Mass Distribution



## GPC/SEC - Conditions

Sample concentration	0,60 g/l	Inject volume	20 µl
Solvent	THF	Flow rate	0,50 ml/min
Precolumn [8 x 50 mm]	PSS SDVe 10µm	Temperature	23 °C
Columns [analytical, each 8 x 300 mm]	PSS SDVe 10µm 10e5Å / 10e5Å	Operator	S. Fugmann
Data Acquisition Software	PSS WinGPC		

## GPC/SEC - Results

Detector	Mw [Da]	Mn [Da]	Mp [Da]	PDI [Mw/Mn]
Shodex RI 71	807000	636000	1050000	1,27


GPC/SEC - Results based on prot. Poly(styrene) calibration and were multiplied with the factor 1.07

**Note:**

Mw = Weight average molecular weight  
 Mn = Number average molecular weight  
 Mp = Molar mass at the peak maximum  
 PDI = Polydispersity Index

**Storage:** Store the tightly recapped polymer standard in a dry, dark, cool area; e.g. a refrigerator (4 °C).  
**Date of expiry:** See product label.

Manufacture and control according to PSS method of analysis

  
 Dr. T. Hofe  
 production director

