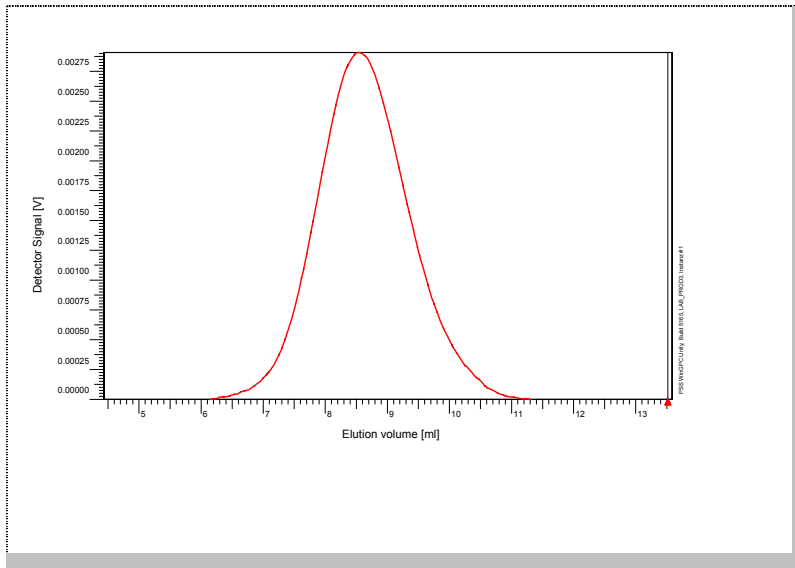


Certificate of Analysis

Polymer type: Poly(styrene-methyl methacrylate)
 Part No: PSS-psmm86k
 Lot No: psmm041006

Elugramm



GPC/SEC – Conditions

Sample concentration	1,00 g/l	Inject volume	20 µl
Solvent	Tetrahydrofuran	Flow rate	1.00 ml/min
Precolumn [8 x 50 mm]	PSS SDV 5µm		
Columns [analytical, each 8 x 300 mm]	PSS SDV 5µm 10e3Å / 10e5Å / 10e6Å		
Temperature	23 °C		
Data Acquisition Software	PSS WinGPC	Operator	R. Leinweber

GPC/SEC – Results*

Detector	Mw (total) [Da]	Mn (total) [Da]	Mp (total) [Da]	PDI (total) [Mw/Mn]
Agilent RID	85 800	45 000	73 300	1.91

* molar mass calculation based on Poly(styrene) calibration

Copolymer - Composition	[w %]
Poly(styrene)	45
Poly(methyl methacrylate)	55

Note:


Mw = Weight Average Molecular Weight
 Mn = Number Average Molecular Weight
 Mp = Molar Mass at the Peak Maximum
 PDI = Polydispersity Index

Storage: Store the tightly recapped polymer standard in a dry, dark, cool area; e.g. a refrigerator (4 °C).

Date of expiry: yyyy/mm/dd (See also product label.)

Date of approval: yyyy/mm/dd

Manufacture and control according to PSS method of analysis


 Dr. T. Hofe
 production director



PSS Polymer Standards Service GmbH
 In der Dalheimer Wiese 5
 55120 Mainz | Germany

Phone +49 6131 96239-0
Fax +49 6131 96239-11
E-Mail info@pss-polymer.com
Web www.pss-polymer.com

Polymer Standards Service-USA, Inc.
 160 Old Farm Rd, Suite A
 Amherst | MA 01002 | USA

Phone +1 413 835-0265
Fax +1 413 835-0354
E-Mail usa@pss-polymer.com
Web www.pss-polymer.com