

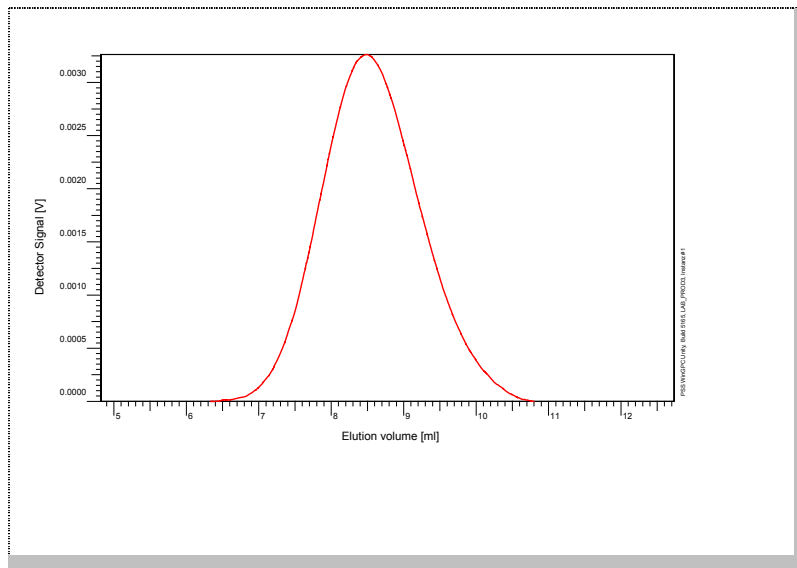
# Certificate of Analysis

Polymer type: Poly(styrene-methyl methacrylate)

Part No: PSS-psmm87k

Lot No: psmm051006

## Elugramm



## GPC/SEC – Conditions

Sample concentration	1,00 g/l	Inject volume	20 µl
Solvent	Tetrahydrofuran	Flow rate	1.00 ml/min
Precolumn [8 x 50 mm]	PSS SDV 5µm		
Columns [analytical, each 8 x 300 mm]	PSS SDV 5µm 10e3A / 10e5A / 10e6A		
Temperature	23 °C		
Data Acquisition Software	PSS WinGPC	Operator	R. Leinweber

## GPC/SEC – Results\*

Detector	Mw (total) [Da]	Mn (total) [Da]	Mp (total) [Da]	PDI (total) [Mw/Mn]
Agilent RID	87 700	53 900	79 700	1.63

\* molar mass calculation based on Poly(styrene) calibration

Copolymer - Composition	[w %]
Poly(styrene)	51
Poly(methyl methacrylate)	49

**Note:**


Mw = Weight Average Molecular Weight  
Mn = Number Average Molecular Weight  
Mp = Molar Mass at the Peak Maximum  
PDI = Polydispersity Index

**Storage:** Store the tightly recapped polymer standard in a dry, dark, cool area; e.g. a refrigerator (4 °C).

**Date of expiry:** yyyy/mm/dd (See also product label.)

**Date of approval:** yyyy/mm/dd

*Manufacture and control according to PSS method of analysis*

  
Dr. T. Hofe  
production director

