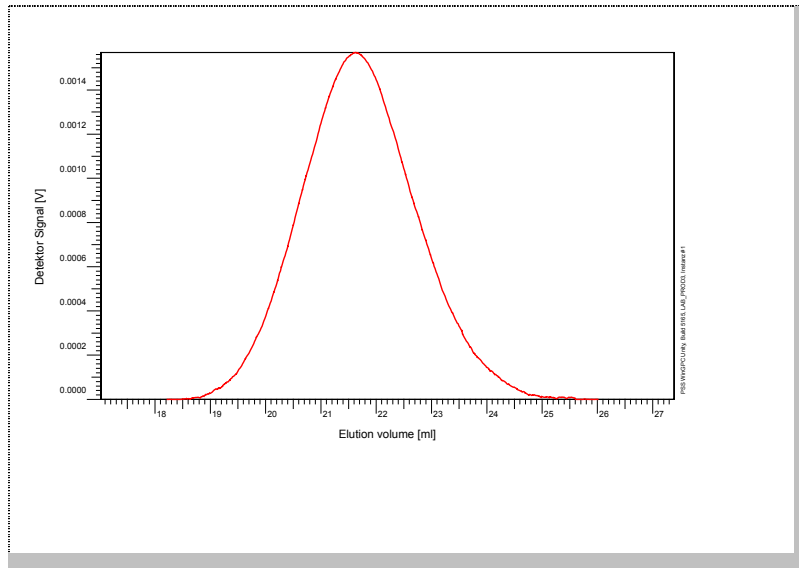


# Certificate of Analysis

Polymer type: Poly(styrene-methyl methacrylate)  
 Part No: PSS-psmm100k  
 Lot No: psmm081006

## Elugramm



## GPC/SEC – Conditions

Sample concentration	1,00 g/l	Inject volume	20 µl
Solvent	Tetrahydrofuran	Flow rate	1.00 ml/min
Precolumn [8 x 50 mm]	PSS SDV 5µm		
Columns [analytical, each 8 x 300 mm]	PSS SDV 5µm 10e3A / 10e5A / 10e6A		
Temperature	23 °C		
Data Acquisition Software	PSS WinGPC	Operator	R. Leinweber

## GPC/SEC – Results\*

Detector	Mw (total) [Da]	Mn (total) [Da]	Mp (total) [Da]	PDI (total) [Mw/Mn]
Agilent RID	103 000	80 500	93 600	1.27

\* molar mass calculation based on Poly(styrene) calibration

Copolymer - Composition	[w %]
Poly(styrene)	20
Poly(methyl methacrylate)	80

### Note:


Mw = Weight Average Molecular Weight  
 Mn = Number Average Molecular Weight  
 Mp = Molar Mass at the Peak Maximum  
 PDI = Polydispersity Index

**Storage:** Store the tightly recapped polymer standard in a dry, dark, cool area; e.g. a refrigerator (4 °C).

**Date of expiry:** yyyy/mm/dd (See also product label.)

**Date of approval:** yyyy/mm/dd

*Manufacture and control according to PSS method of analysis*

  
 Dr. T. Hofe  
 production director