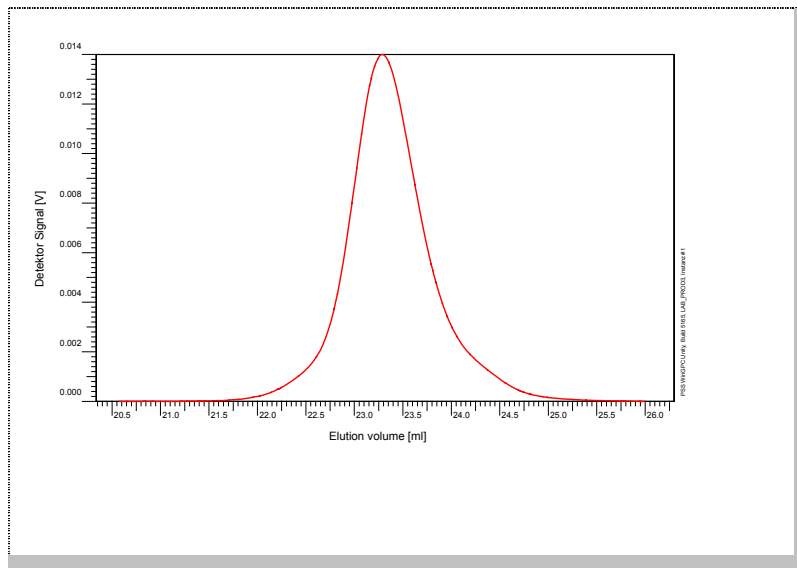


Certificate of Analysis

Polymer type: Poly(styrene-b-methyl methacrylate)
 Part No: PSS-psmm85k
 Lot No: psmm10205

Elugramm



GPC/SEC – Conditions

| | | | |
|---------------------------------------|-----------------------------------|---------------|--------------|
| Sample concentration | 1,00 g/l | Inject volume | 20 µl |
| Solvent | Tetrahydrofuran | Flow rate | 1.00 ml/min |
| Precolumn [8 x 50 mm] | PSS SDV 5µm | | |
| Columns [analytical, each 8 x 300 mm] | PSS SDV 5µm 10e3Å / 10e5Å / 10e6Å | | |
| Temperature | 23 °C | | |
| Data Acquisition Software | PSS WinGPC | Operator | R. Leinweber |

GPC/SEC – Results*

| Detector | Mw (total) [Da] | Mw (ps) [Da] | Mw (mm) [Da] | PDI ([Mw/Mn]) |
|-------------|-----------------|--------------|--------------|---------------|
| Agilent RID | 84 400 | 42 200 | 42 200 | 1.06 |

* molar mass calculation based on monomer consumption

| Copolymer - Composition | [w %] |
|---------------------------|-------|
| Poly(styrene) | 50 |
| Poly(methyl methacrylate) | 50 |


Note:

Mw = Weight Average Molecular Weight
 Mn = Number Average Molecular Weight
 Mp = Molar Mass at the Peak Maximum
 PDI = Polydispersity Index

Storage: Store the tightly recapped polymer standard in a dry, dark, cool area; e.g. a refrigerator (4 °C).

Date of expiry: See product label.

Manufacture and control according to PSS method of analysis


 Dr. T. Hofe
 production director

