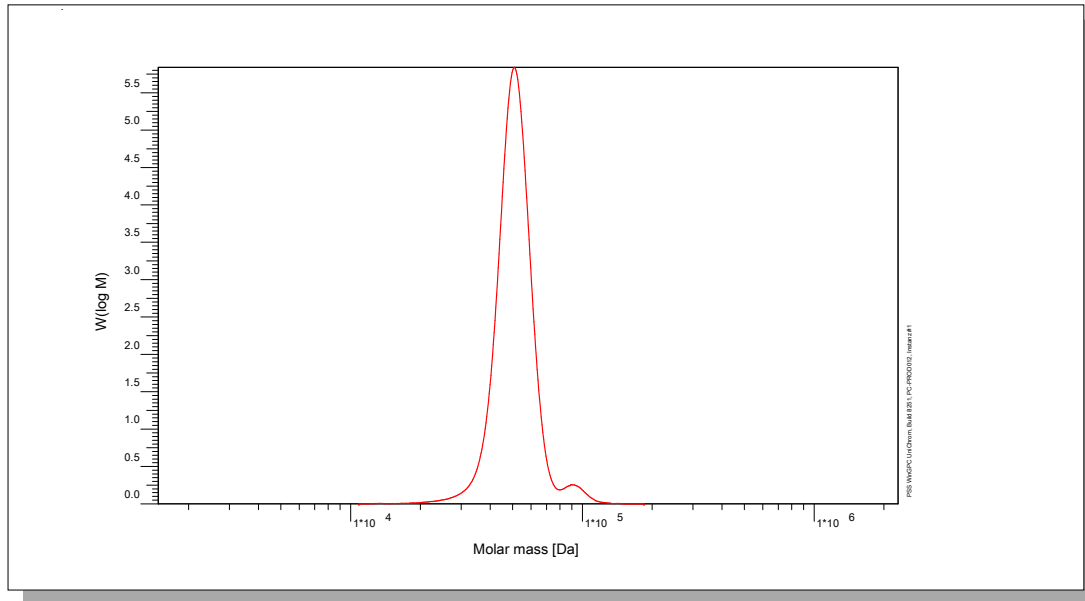


# Certificate of Analysis

Polymer type: Poly(styrene-b-dimethylsiloxane)  
 Part No: PSS-psdms60k  
 Lot No: pspdms060716n

## Molar Mass Distribution



## GPC/SEC - Conditions

Sample concentration	1,00 g/l	Inject volume	20 µl
Solvent	Tetrahydrofuran	Flow rate	1,00 ml/min
Precolumn [8 x 50 mm]	PSS SDV 5µm	Temperature	23 °C
Columns [analytical, each 8 x 300 mm]	PSS SDV 5µm 10e3Å / 10e5Å / 10e6Å	Operator	J.Preis
Data Acquisition Software	PSS WinGPC		

## GPC/SEC - Results\*

Detector	Mn total [Da]**	Mn ps [Da]*	Mn pdms [Da]**	PDI total [Da]*
PSS SECcurity RI	60500	46600	13900	1,04

\* molar mass calculation based on calibration with poly(styrene)

\*\* copolymer composition based on 1H NMR (nuclear magnetic resonance) analysis

\*\*\* molar mass calculation based on copolymer composition

Copolymer - Composition**	[w %]
Poly(styrene)	77
Poly(dimethylsiloxane)	23

**Note:**

Mw = Weight average molecular weight  
 Mn = Number average molecular weight  
 Mp = Molar mass at the peak maximum  
 PDI = Polydispersity Index

**Storage:** Store the tightly recapped polymer standard in a dry, dark, cool area; e.g. a refrigerator (4 °C).

**Date of expiry:** See product label.

Manufacture and control according to PSS method of analysis



Dr. T. Hofe  
 production director

