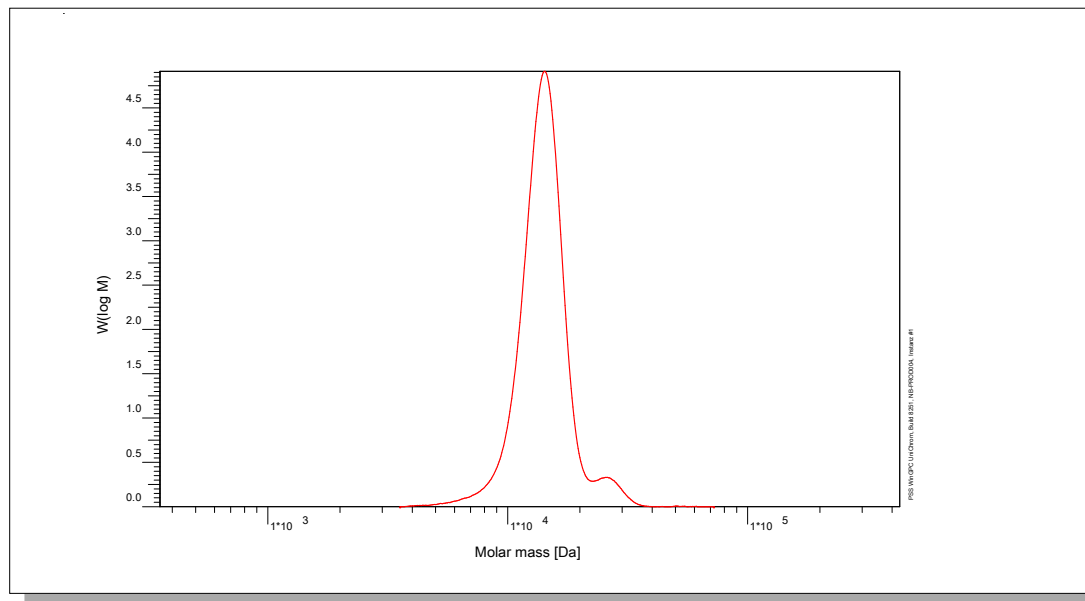


Certificate of Analysis

Polymer type: Poly(styrene-b-dimethylsiloxane)
 Part No: PSS-pspdms10k-4
 Lot No: pspdms290818

Molar Mass Distribution



GPC/SEC - Conditions

Sample concentration	1,00 g/l	Inject volume	20 µl
Solvent	Tetrahydrofuran	Flow rate	1,00 ml/min
Precolumn [8 x 50 mm]	PSS SDV 5µm	Temperature	23 °C
Columns [analytical, each 8 x 300 mm]	PSS SDV 5µm 10e3Å / 10e5Å / 10e6Å	Operator	J.Preis
Data Acquisition Software	PSS WinGPC		

GPC/SEC - Results*

Detector	Mn total [Da]**	Mn ps [Da]*	Mn pdms [Da]**	PDI total [Da]*
PSS SECcurity RI	11700	9600	2100	1,06

* molar mass calculation based on calibration with poly(styrene)

** copolymer composition based on 1H NMR (nuclear magnetic resonance) analysis

*** molar mass calculation based on copolymer composition

Copolymer - Composition**	[w %]
Poly(styrene)	82
Poly(dimethylsiloxane)	18

Note:

Mw = Weight average molecular weight
 Mn = Number average molecular weight
 Mp = Molar mass at the peak maximum
 PDI = Polydispersity Index

Storage: Store the tightly recapped polymer standard in a dry, dark, cool area; e.g. a refrigerator (4 °C).

Date of expiry: See product label.

Manufacture and control according to PSS method of analysis



Dr. T. Hofe
production director



PSS Polymer Standards Service GmbH
 In der Dalheimer Wiese 5
 55120 Mainz | Germany

Phone +49 6131 96239-0
Fax +49 6131 96239-11
E-Mail info@pss-polymer.com
Web www.pss-polymer.com

Polymer Standards Service-USA, Inc.
 160 Old Farm Rd, Suite A
 Amherst | MA 01002 | USA

Phone +1 413 835-0265
Fax +1 413 835-0354
E-Mail pssusa@pss-polymer.com
Web www.pss-polymer.com